

Stone Fabrication & Supplies



Stone Fabrication & Supplies

Accessories For Angle Grinders And Hand Tools



ADAPTERS

To adapt 5/8"-11 threaded angle grinder to 1/2 gas threaded core bits. For conventional routers to adapt shaping bits with 22mm flange. To Adapt 1/2" Straight Shaft To 5/8-11" Male Thread.

ADAPTERS

Adapters can be found in our Accessories For Angle Grinders And Hand Tools line of Products.

ADAPTER 1/2 GAS FEMALE TO 1/2 GAS FEMALE

ADAPTER 1/2 GAS MALE TO 1/2 GAS FEMALE

ADAPTER 5/8-11 FEMALE TO 1/2 GAS FEMALE

ADAPTER 1/2" SHAFT TO 10MM FEMALE THREAD

ADAPTER 1/2" SHAFT X 5/8-11 MALE THREAD



ALPHA ELECTROPLATED DRILL BITS

Designed for Drilling Holes in Tile and Stone for Pre-Installation or Post-Installation Placement. Works Great On Marble, Granite, Engineered Stone, Ceramic, Porcelain and Glass Tile and Panels. Can Be Used On A Standard 3/8" or Larger Drill. Can Fit On Water-Fed Polishers with 5/8"-11 Spindles Using The Drill Bit Adapter. Ideal for Drilling Holes for Anchors for Bathroom Fixtures, Faucet and Plumbing Pipes. Available in 3/16", 1/4", 5/16", 3/8", 1/2", 1-3/8" and 1-1/2" Sizes.



ALPHA PROFESSIONAL TOOLS 3" RIGID BACKER PAD MALE VELCRO 5/8"-11 THREAD

Extremely flexible, these backer pads are ideally suited for tough contours and inside curves, allowing the user to get in tight corners with ease. Available in 2", 3", 4", and 5" versions, these pads come with the standard 5/8"-11 thread, commonly seen on most of the polishing tools in use today. Some metric sizes are available on request.



ALPHA PROFESSIONAL TOOLS BACKER PAD MALE VELCRO

The Alpha® Flexible Backer Pads are hook and loop backed and will accept Ceramica, Sandpaper and Felt Wheels. All users of polishing equipment will love the quality and long life of these backer pads. Extremely flexible, these backer pads are ideally suited for tough contours and inside curves, allowing the user to get in tight corners with ease. Available in 2", 3", 4", and 5" versions, these pads come with the standard 5/8"-11 thread, commonly seen on most of the polishing tools in use today. Some metric sizes are available on request. Adapt 1/2" Straight Shaft To 5/8-11" Male Thread.



ALPHA PROFESSIONAL TOOLS ECOGRINDER CADDY

The Alpha® Ecogrinder Caddies allow the operator to stand and not have to work on their knees when grinding and sanding concrete, terrazzo and masonry products or doing surface preparation work. The height adjustment mechanism allows the caddy to be adjusted to accommodate individual users. The unit is available in two versions for both Ecogrinders (110v and 220v). The unit is available in two versions for both Ecogrinders (110v and 220v). A halogen light shines above the grinding area to show scratches in dark areas. This light can be turned on/off independently. Attach the Alpha® Dust Bag Carriage directly to the Ecogrinder and utilize the Ecogrinder's built-in vacuum system, making the operation simple, easy and virtually dust-free!

Stone Fabrication & Supplies

Accessories For Angle Grinders And Hand Tools



ALPHA PROFESSIONAL TOOLS ECOGUARD G FLEXIBLE HOSE KIT DUST COLLECTION COVER

Alpha® introduces a new Ecoguard designed for collecting dust when using the Alpha® HSG-125 or other High-Speed Angle Grinder. The Ecoguard Type G is intended for use when grinding with wheels up to 5" in diameter. It is made of high-quality construction for heavy-duty applications. This dust collection cover creates a virtually dust-free environment when connected to a vacuum. Fits on most popular high-speed angle grinders. Removable flat covers allows grinding to the edge. Suspended dust cover prevents dust from escaping.



ALPHA PROFESSIONAL TOOLS ECOGUARD TYPE C DUST COLLECTION COVER

Alpha® introduces the new Ecoguard designed for collecting dust when using our High-Speed Angle Grinder. The Ecoguard Type C is for use when cutting with dry blades up to 5" in diameter. It is made of high-quality construction for heavy-duty applications. This hybrid dust collection cover eliminates the mess and can be used with or without a vacuum! Fits on most popular high-speed angle grinders. Use with or without a vacuum cleaner. Conveniently comes with a dust bag.



ALPHA PROFESSIONAL TOOLS ECOGUARD TYPE G DUST COLLECTION COVER

Alpha® introduces a new Ecoguard designed for collecting dust when using the Alpha® HSG-125 or other High-Speed Angle Grinder. The Ecoguard Type G is intended for use when grinding with wheels up to 5" in diameter. It is made of high-quality construction for heavy-duty applications. This dust collection cover creates a virtually dust-free environment when connected to a vacuum. Fits on most popular high-speed angle grinders. Removable flat covers allows grinding to the edge. Suspended dust cover prevents dust from escaping.



ALPHA PROFESSIONAL TOOLS ECOGUARD TYPE W DUST COLLECTION COVER

Alpha® Introduces the Ecoguard Type W which must be used with a vacuum, or other dust collection system, to successfully collect the dust and larger particles derived from using wider kerf diamond blades such as the Alpha® Tuck Pointing or Crack Chasing blades. The Ecoguard Type W includes three unique features. First is the ability to easily adjust the cutting depth by using a simple wing nut operation. The second is the nose guide that indicates the cut line and the third is the ability to view inside the cover, while cutting, due to the clear polycarbonate material Construction. This feature is useful during Tuck Pointing applications.



ALPHA PROFESSIONAL TOOLS FILTER/REGULATOR MANIFOLD SYSTEMS

Alpha® has created Filter/Regulator (F/R) manifold systems to help eliminate potential issues caused by rust or contamination in the pipes or connectors feeding the pneumatic tools. The Filter/Regulator also helps prevent pressure drops when using a large volume of air, so the pressure can be set on the tools at 85 PSI, while the main system can run at 125 PSI. The systems, which comes in two sizes (53 CFM & 106 CFM), consist of a Filter/Regulator with a shut off/dump valve, and an aluminum manifold with three or more aluminum quick disconnects. The Alpha® F/R Manifold System and is designed for installation at the point of use and is configured to adapt to the existing shop piping and increase the life of the tools. Keep your system clean and get the maximum performance from your pneumatic tools!

Stone Fabrication & Supplies

Accessories For Angle Grinders And Hand Tools



[ALPHA PROFESSIONAL LOCK NUT \(5/8" - 11\) FOR VARIABLE DRIVE](#)



[ALPHA PROFESSIONAL TOOLS VARIABLE DRIVE HUB DRIVE SQUARE USE WITH WDC PADS](#)

Designed For Use With Ecogrinder



[ITALIAN CRAFTSMAN GENERIC BACKING PAD EXTRA SUPER FLEXIBLE MALE VELCRO 5/8"-11 FEMALE THREAD](#)

Italian Craftsman 4" Generic Backing Pad Extra Super flexible Backing Pads for use with Velcro backed discs. 5/8-11 female thread Male velcro



[ITALIAN CRAFTSMAN GENERIC BACKING PAD MALE VELCRO 5/8"-11 FEMALE THREAD](#)

Italian Craftsman Generic Backing Pad Flexible Backing Pads for use with Velcro backed discs. 5/8-11 female thread Male velcro. Size 3"-7"



[ITALIAN CRAFTSMAN GENERIC BACKING PAD RIGID, ALUMINUM MALE VELCRO 5/8"-11 FEMALE THREAD](#)

Italian Craftsman Generic Backing Pad Rigid, Aluminum Backing Pads for use with Velcro backed discs. 5/8-11 female thread Male velcro ize 3"-7" **\$14.00 - \$37.00**



[ITALIAN CRAFTSMAN YELLOW BACKING PAD 5" SEMI-RIGID VINYL FACE](#)

Italian Craftsman 5" Yellow Backing Pad Semi-Rigid Backing Pads for use with Pressure Sensitive Adhesive (PSA) backed sand paper. Male thread Vinyl Backed



[ITALIAN CRAFTSMAN YELLOW BACKING PAD SEMI-RIGID MALE VELCRO 5/8"-11 FEMALE THREAD](#)

Italian Craftsman Yellow Backing Pad Semi-Rigid Backing Pads for use with Velcro backed discs. 5/8-11 female thread Male velcro

Stone Fabrication & Supplies

Accessories For Angle Grinders And Hand Tools



LOC-LINE HOSE SYSTEM SEGMENTED WATER HOSE

LOC-LINE® is the original modular hose system. Four hose diameters and a multitude of nozzles, fittings and accessories allow for customized solutions suitable for a wide variety of industrial and commercial applications.



METAL LOCK SUPPORT 5/8" - 11 FEMALE THREAD

Adaptor for snail lock style abrasives and polishing mediums.



PEARL ABRASIVES ELECTROPLATED DIAMOND BLADE FINE CUTTING

Electroplated Marble Blade.



PEARL ABRASIVES ROLLER BASE FOR WORM DRIVE SAWS

"THE ORIGINAL" BLADE ROLLER™ - REMOVABLE ROLLING CARRIAGE FOR WORM DRIVE SAWS. No tools required! Non-marking wheels. Eliminate costly heavy equipment.

Stone Fabrication & Supplies

Adhesives, Glues, Fillers and Patching Materials



ALPHA PROFESSIONAL TOOLS G-TAPE

Alpha Professional Tools G-Tape, This tape is waterproof and tears straight and easily by hand. It is highly weather/UV resistant and can be used in temperatures ranging from -40F to 200°F. The ability to reposition it makes it great for quick repairs on all kinds of surfaces. The best part is that, although the adhesion is strong, it does not leave any residue when removed.



BONSTONE LAST PATCH TINT 1 OZ

Our tints are for use in all Bonstone® and Touchstone™ products. Powder tints are available for epoxies in the following 7 colors: Powder Tints Black, Brown, Gray, Green, Rust, White, Yellow



BONSTONE LAST PATCH TINTS 7 PACK 1 OZ. JARS

Our tints are for use in all Bonstone® and Touchstone™ products. Powder tints are available for epoxies in the following 7 colors: Powder Tints Black, Brown, Gray, Green, Rust, White, Yellow **\$51.10**



BONSTONE LIMESTONE KIT KNIFE GRADE 1 QT. PART A AND 4 - 10 OZ. PART B HARDENERS

Last Patch Limestone, A kit packaged exterior grade stone repair compound. Designed for addition of stone aggregate, overfill of patch area, and grinding flush. **\$60.00**



ITALIAN CRAFTSMAN GLUE CLEAR KNIFE GRADE

Italian Craftsman Polyester Adhesives. Known as the Best Polyester Adhesive in the Industry. Clear is best designed for adding colorant. Available in flowing and knife grade. Quart or Gallon size. **\$17.75 - \$77.00**

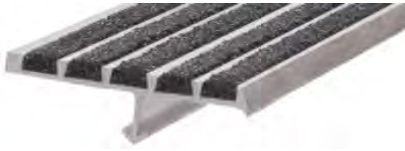


ITALIAN CRAFTSMAN SHELLAC BARS

Shellac Bars are used to fill small holes and chips in the face or on the edges of marbles, granites and natural stones. Simply heat the melting stick with a low heat flame or a melting iron and drip the liquid into the holes or chipped areas, leaving the material higher than the surface, and let harden. Once the shellac is hard use a fine grain steel wool (#0) and smooth the hardened shellac flush to the surface.. **\$15.05 - \$7.10**

Stone Fabrication & Supplies

Adhesives, Glues, Fillers and Patching Materials



ITALIAN CRAFTSMAN SILICON CARBIDE POWDER SLIP STRIP FILLER

ITALIAN CRAFTSMAN SILICON CARBIDE POWDER SLIP STRIP FILLER a product by Italian Craftsman is a 36 Grit Silicon Carbide Powder Is Used To Fill The Slots On Stair Treads Made Of Stone To Make Permanent Slip Strips. Mix With Clear Flowing Glue To Make A Permanent Bond.



ITALIAN CRAFTSMAN TRAVERTINE FILL ADDITIVE



ITALIAN CRAFTSMAN TRAVERTINE FILL BEIGE (BUFF)



ITALIAN CRAFTSMAN TRAVERTINE FILL BEIGE (WHITE)



ITALIAN CRAFTSMAN TRAVERTINE-FILL KIT



MASTICE 2000 BELLINZONI TRANSPARENT LIQUID



RAZOR BLADES SINGLE EDGE INDIVIDUALLY WRAPPED

This Single Edge Razor Blade is top quality, industrial grade, .009" (.23 mm) thick, Carbon C-1095 surgical steel, precision-honed for extra sharpness. It delivers durability along with the exacting, quality cut that professionals demand. Packed 100 each per box, there are 50 boxes per case.



SUPER EDGES 750 ML

Stone Fabrication & Supplies

Adhesives, Glues, Fillers and Patching Materials



TENAX BLACK KNIFE GRADE

Black knife grade is a high quality polyester mastic adhesive used to vertically and horizontally repair, rebuild, glue, and fill marble, granite and engineered stones. Colored knife grade will cure shiny and is very polishable. Not suitable for temperatures below 32°. Recommended for interior use. Other colors available upon special request.



TENAX BUFF FLOWING

Tenax BUFF FLOWING 2 Part Polyester Resin 1 Liter



TENAX BUFF KNIFE GRADE

Tenax BUFF KNIFE GRADE 2 Part Polyester Resin 1 Liter



TENAX COLOR PASTE 10 OZ BOTTLE

Tenax COLOR PASTE 10 OZ Bottle



TENAX COMPLETE COLOR KIT 10 COLORS 2.5 OZ

UNIVERSAL - Tenax Universal Colors were made to offer 1 solution for all your adhesive needs.

Comes as a set of 10 - Black, White, Red, Red Brown, Brown, Yellow, Blue, Grey, Buff, Green

Brilliant Colors that can be used by themselves or mix multiple colors together to create the perfect color match glue for your stone application.



TENAX CRYSTAL FLOWING WATER CLEAR 1 LITER

Crystal flowing is a high quality polyester mastic used to horizontally repair, rebuild, bond, and fill. Crystal is free flowing and will cure shiny, is very polishable and colors easily to match granite and other stones. It is perfectly suited for any application where the adhesive or seam/joint must be hidden. It cures fast and bonds extremely strong. Cures in lower temperature. Not suitable for temperatures below 32°. Recommended for interior use. UV resistant.

Stone Fabrication & Supplies

Adhesives, Glues, Fillers and Patching Materials



TENAX CRYSTAL KNIFE GRADE WATER CLEAR 1 LITER

Crystal knife is a high quality polyester mastic used to vertically or horizontally repair, rebuild, bond, and fill. Crystal is very smooth in consistency, and will cure shiny, is very polishable and colors easily to match granite and other stones. It is perfectly suited for any application where the adhesive or seam/joint must be hidden. It cures fast and bonds extremely strong. Cures in lower temperatures. Not suitable for temperatures below 32°. Recommended for interior use. UV resistant.



TENAX DOMO 10 TUBES

Tenax DOMO 10 TUBES



TENAX DOMO A & B EPOXY

Domo 10 A & B is a two part knife grade epoxy designed for all types of stone. Domo is one of the strongest epoxies in the stone industry. It will bond to almost any surface including polished surfaces. Domo will bond to both damp and dry surfaces. Domo is designed for permanent application. Suitable for temperatures below 32° as well as extreme heat. Recommended for both interior and exterior applications. **\$59.00 - \$160.00**



TENAX GLAXS BM75 LIQUID GEL 100 GRAM POUCH

Glaxs is a new generation bi-component resin with zero yellowing to the sun and UV rays. Glaxs is a transparent resin, solvent free, low viscosity and medium reactivity adhesive. Glaxs offers good penetration and hardness. The resin can harden at 0°C. Glaxs will stay bright also when the level of humidity is high and the temperature is low.



TENAX RIVO 15 OR 50 2 PART EPOXY

Rivo 15 or 50 A & B is a two part knife grade epoxy designed for all types of stone. Rivo is one of the strongest epoxies in the stone industry. It will bond to almost any surface. Rivo 15 is designed for permanent application. The stone will break before the bond will. Suitable for temperatures below 32° as well as extreme heat. Recommended for both interior and exterior applications. Material must be dry before application. Straw in color. VOC Compliant.



TENAX STRONGEDGE EPOXY PART A 1 QUART PART B 1/2 QUART CLEAR

StrongEdge, the strongest clear, flowing epoxy specifically designed for fabrication and lamination. Once applied on a countertop, the stone or substrate will not delaminate or break where StrongEdge has been applied! StrongEdge is the clearest flowing epoxy on the market. StrongEdge does not shrink, it takes a polish, as well as accepts color to color match the stone if necessary.

Stone Fabrication & Supplies

Adhesives, Glues, Fillers and Patching Materials



TENAX TEPOX V COLOR MATCH SYSTEM

Tepox V is a special chemical color liquid used to color match stones that have been resined with color additives. Tepox V may also be used to enhance slabs or to alter the look of a slab for specific applications. Use a single color or mix multiple colors together to achieve the desired color. epox V is designed to be used in conjunction with Ager or Ager Tiger. It is also recommended to follow up with Tenax Proseal or Tenax Protex premium grade sealers.



TENAX TEPOX V COLOR MATCH SYSTEM KIT (6 COLORS)

Tepox V is a special chemical color liquid used to color match stones that have been resined with color additives. Tepox V may also be used to enhance slabs or to alter the look of a slab for specific applications. Use a single color or mix multiple colors together to achieve the desired color. Tepox V is designed to be used in conjunction with Ager or Ager Tiger. I Tepox V is for indoor use only.



TENAX TRANSPARENT FLOWING

ransparent Flowing is a high quality polyester mastic used to horizontally repair, rebuild, bond, and fill. Flowing will cure shiny, is very polishable and colors easily to match the stone. It cures fast and bonds extremely strong. Cures in lower temperatures. Excellent for rodding reinforcement on a countertop. Not suitable for temperatures below 32°. Recommended for interior use.



TENAX TRANSPARENT KNIFE GRADE "H"

Knife grade H is a high viscosity polyester adhesive used to vertically or horizontally repair, rebuild, bond, and fill. Knife grade H will cure shiny, is very polishable and colors easily to match the stone. It cures fast and bonds extremely strong. Cures in lower temperatures. Not suitable for temperatures below 32°. Recommended for interior use.



TENAX TRANSPARENT KNIFE GRADE TIXO SPEEDY

Tenax Transparent Tixo R Knife Grade is a high viscosity polyester adhesive used to vertically or horizontally repair, rebuild, bond, and fill. Knife grade Tixo is very smooth in consistency, easy to stir and spread and will cure shiny. It is very polishable and colors easily to match the stone. It cures fast and bonds extremely strong. Cures in lower temperatures. Not suitable for temperatures below 32°. Recommended for interior use.



TENAX TRAVERTINE FILLER

Tenax Travertine filler is used to horizontally repair, rebuild, glue, and fill travertine, as well as similar stones. Tenax Travertine filler is a semisolid consistency that is smooth and easy to spread. It is used to fill all size holes in travertine and will accept a polish. Not suitable for temperatures below 32°. Recommended for interior use. Other colors available upon special request. **\$15.95**

Stone Fabrication & Supplies

Adhesives, Glues, Fillers and Patching Materials



TENAX UNIBLACK2

Uniblack 2 is a formulated black liquid wax used to increase the black effect on polished, brushed and smooth surfaces. The Uniblack 2 increases the black effect without increasing the gloss. The product can be used on automatic waxing machines or manually. Recommended for restoring old materials which have lost their blackness.



TENAX WHITE FLOWING

Tenax White Flowing is a high quality polyester mastics used to horizontally repair, rebuild, glue and fill marble and quartz surfaces. Tenax Flowing will cure shiny and is very polishable. Not suitable for temperatures below 32°. Recommended for interior use. Other colors available upon special request.



TENAX WHITE KNIFE GRADE

White knife grade is a high quality polyester mastic adhesive used to vertically and horizontally repair, rebuild, glue, and fill marble, granite and engineered stones. Colored knife grade will cure shiny and is very polishable. Not suitable for temperatures below 32°. Recommended for interior use. Other colors available upon special request.



WOOD & STONE SUPER PENETRATING ACRYLIC

Super Penetrating Acrylic is an acrylic based adhesive designed for use with natural stone, especially granite. It is clear to translucent in color, fast setting, and easy to apply. Penetrating Crack Filler is a thin liquid that flows like water and is designed to fill fine cracks and reinforce stone. Super Penetrating is low viscosity system for bonding and filling on horizontal surfaces.

Stone Fabrication & Supplies

Angle Grinders And Hand Tools



ALPHA - PSC-150 MITER CUTTING KIT

One System for Straight, Curve and Miter Cuts. Precise Miter Cuts for Laminated Waterfall Edge and Book-Matching. Miter Cut 1-1/4" Material with Ease. One-Time Easy Setup on the Guide Rail Allows for Two. Different Miter Cut Positions for Lamination Prep. Save Time and Increase Shop Productivity. Kit Contains: 2-PSC-150 Stone Cutters, 2-6" Carriage Assemblies, Guide Rail Set (4', 7', 12') & Surface Protection Tape



ALPHA PROFESSIONAL TOOLS 5" HIGH-SPEED ANGLE GRINDER

Alpha Professional Tools® is proud to introduce a new HSG-125 High-speed Angle Grinder. This 5" grinder has a powerful 7.2 Amp (800W) motor with 9,700 rpm. The HSG-125 is equipped with a standard 5/8" spindle and two sets of flange/lock nut sets (7/8" and 20mm arbors) in order to accommodate 4", 4-1/2" and 5" diameter blades.



ALPHA PROFESSIONAL TOOLS ECOGRINDER VIRTUALLY DUST-FREE CUTTING SOLUTIONS!

The Alpha® EcoGrinder is the ideal high performance grinder with a built-in vacuum system. It is designed for continuous production in fabrication shops as well as job sites. The Alpha® EcoGrinder ensures a virtually dust-free environment without the use of an external vacuum system or expensive dust collector. Its unique slide cover allows the EcoGrinder grinding wheel to grind up to the wall.



ALPHA PROFESSIONAL TOOLS WATER FEED AIR POLISHER AIR 300

Introducing the Alpha® AIR-300, designed for unique applications that are difficult to accomplish using conventional polishers. A smaller version of the well-known Alpha® AIR-658, the AIR-300 is ergonomically designed to fit comfortably in your hand and only weighs 1.6 pounds reducing fatigue from long hours of polishing. The smaller design is easy to maneuver and produces flawless sink rims and bowls.



ALPHA PROFESSIONAL TOOLS WATER FEED AIR POLISHER AIR 680

The Alpha® AIR-680 is the Ultimate Pneumatic Polisher for Fabricators. This high performance, pneumatic polishing tool has a central water-fed distribution system that produces the highest quality finishes. It has a maximum speed of 4,000 RPM, consumes 15 CFM and requires 85 PSI. With a 5/8"-11 spindle, the AIR-680 is lightweight and ergonomically designed. It is now equipped with 15ft flexible air and water supply hoses and an oil port for easy maintenance.



ALPHA PROFESSIONAL TOOLS WET CUTTING CIRCULAR SAW ESC-125

ESC-125 Electric Stone Cutter, Electric Wet/Dry Stone Cutter, Precision Cuts Everytime, Powerful Motor For Use On Granite, Quartz Surfaces, Marble, Limestone, Concrete, and Sintered Slabs, Water-Feed Supply Eliminates The Harmful Dust Particles, Base Plate Allows Guides To Be Used in Multiple Ways, Dust Cover for HEPA Vacuum Connection, New Clamping System Ensures Cutting Stability, Included Self-Stick Felt Strips Protects .

Stone Fabrication & Supplies

Angle Grinders And Hand Tools



ALPHA PROFESSIONAL TOOLS ACCESSORIES FOR WET SINK-HOLE CUTTING KIT

Convenient Curve Cutting Solution. The Alpha® Wet Sink-Hole Cutting Kit was created as a convenient solution for those who work with pre-fabricated countertops and need to cut sink holes.



ALPHA PROFESSIONAL TOOLS COUNTER TRIM KIT

The Countertop Trim Kit was created for those who work with pre-fabricated countertops and have the need to trim the piece for a custom fit. The kit combines our AWS-125 Wet Stone Cutter with a universal carriage assembly and a 4' guide rail to create a clean, straight cut. All of the products are made of high-quality construction and are easy to setup and operate.



ALPHA PROFESSIONAL TOOLS ECOCUTTER VIRTUALLY DUST-FREE CUTTING SOLUTION!

The Ecocutter Dry Tile Cutting System was introduced as a portable dry cutting system for tile installers. This system included the Ecocutter, table and stand. Now, Alpha Professional Tools® is offering the Ecocutter as a stand-alone tool for all your dry cutting applications.



Private: ALPHA PROFESSIONAL TOOLS ECOGRINDER GRINDING SOLUTION!

The Alpha® EcoGrinder is the ideal high performance grinder with a built-in vacuum system. It is designed for continuous production in fabrication shops as well as job sites. The Alpha® EcoGrinder ensures a virtually dust-free environment without the use of an external vacuum system or expensive dust collector. Its unique slide cover allows the EcoGrinder grinding wheel to grind up to the wall.



ALPHA PROFESSIONAL TOOLS ELECTRIC POLISHER WATER FED

The new generation of electric wet polishers, the AWP-158, is designed for polishing, shaping, core drilling and light grinding. This 7.8 amp, 800-watt, 3,000 RPM machine is a powerful workhorse suitable for use in the shop or on the job site. The AWP-158 features several improvements over previous generations of polishers. In addition to the increased power and spindle speed, there are two types of handles included: a side handle for edge profiling and polishing and a "C" handle for core drilling and flat surface polishing.



ALPHA PROFESSIONAL TOOLS TILE BULLNOSE KIT

The Tile Bullnose Kit was designed to create a bullnose edge on tile or stone and polish it to a factory quality finish with a few simple hand-held tools. The kit includes an electric polisher, profiler, backer pad, Ceramica EX discs and an apron.

Stone Fabrication & Supplies

Angle Grinders And Hand Tools



ALPHA PROFESSIONAL TOOLS VARIABLE SPEED WET POLISHER

Alpha® has improved the popular VSP series wet polisher with new features to perform above and beyond your expectations! The new VSP-120 comes with a variable speed control switch with an automatic speed feed-back system to maintain consistent RPMs with or without a load. This switch has also expanded the usable RPM range from 500 RPM to 2,800 RPM.



ALPHA PROFESSIONAL TOOLS WET/DRY VARIABLE SPEED CONCRETE POLISHER

Introducing the Alpha® WDP-120, a Wet/Dry Variable Speed Polisher designed for all decorative concrete applications and wet/dry tile edge finishing. This Hybrid Polisher provides the best quality polish on concrete countertop surfaces when used with water. The included Ecoguard attachment minimizes the amount of water splashed and the in-line GFCI will provide safety and protection.



BAICCHI FLAMING TOOL WITH WATER SPRAY JETS

The flaming tool is used to create the "flamed" finish on granite. Designed to be used with propane gas, this tool comes equipped with the "flamer" which is 6" wide and has rollers, a 40" long gas feed shaft, the attachment for the water coolant and on/off valves for both the Oxygen and the Propane Gas. (regulators, hoses and gas tanks are not included)



BAICCHI PORTABLE DRILL PRESS

The "Baicchi" Portable Drill Press is designed to hold any variable speed drill. (Drill not included) The drill press is compact and sturdy. It has a suction cup on the bottom for holding the unit in place.



BAICCHI TOOTHING CHISEL

Heavy duty tothing chisel. BAICCHI TOOTHING CHISEL is a Heavy duty tothing chisel and is part of our carving and sculpting accessory line of products.



BARRANCA DIAMOND BD-2321WR PNEUMATIC WET POLISHER

The Barranca Diamond BD-2321WR pneumatic wet polishing tool is designed for continuous production applications and improved safety. Cast from aircraft aluminum, the BD-2321WR is one of the most durable tools of its kind on the market for polishing stone. The watertight sealed bearings provide long life and smooth rotational speeds.

Stone Fabrication & Supplies

Angle Grinders And Hand Tools



FLEX 4" AIR POLISHER 5/8"-11 SPINDLE

Flex is proud to introduce a revolutionary new Air Stone Sander/Polisher that sets a new standard in stone working excellence in granite, marble and concrete. Designed especially for use by shop workers, fabricators and for production use, this high performance polishing tool is ergonomically designed for ease of use.



FLEX L 123 100 WET 5" SINGLE SPEED WET POLISHER 5/8"-11 SPINDLE 115 VOLTS

New Water Feed – water feed and flow control are fitted under the motor housing. New Water Connection – brass connection is at the end of a flexible 6-1/2 foot hose. New Electronics – with soft start, overload protection. L 12-3 100 WET has a brass quick fit connector for easy connection to a 1/2" water hose. Extra powerful 9.3 amp motor with high torque for superior applications. Three jet nozzle can be removed to give one central waterjet.



FLEX LE 123 100 WET 5" VARIABLE SPEED WET POLISHER 5/8"-11 SPINDLE 115 VOLTS

Water feed and flow control are fitted under the motor housing. New Water Connection – brass connection is at the end of a flexible 6-1/2 foot hose. New Electronics – with soft start, overload protection, tachogenerator constant speed control and stepless variable speed.



FLEX LW1503 5" SINGLE SPEED WET POLISHER 5/8" 11 SPINDLE 115 VOLTS

Soft start feature for smooth start-ups and less fling-off. 3-prong plug to prevent static electricity accumulation. Easily converts to a sander. Fast and powerful polishing for clear coat finishes. Lock-on button for continuous use operation. No Load Speed (variable speed) 0 - 3,000 RPM Spindle Thread 5/8" - 11 UNC AMPS 10 Overall Length 18-1/2" Net Weight 6.8 lbs. Shipping Weight 8.8 lbs.



FLEX LW1509 4 1/2" HIGH SPEED WET GRINDER 5/8" 11 SPINDLE 115 VOLTS

This compact 4-1/2" high speed WET grinder is designed for maximum material removal of concrete or natural stone. With its 8,300 RPM and 7.8 AMP motor, it is the fastest WET grinder in the market. It is intended for all heavy duty stone grinding applications (bulk material removal, edge breaking, coarse grinding of uneven surfaces and polish preparation work).



FLEX LW603VR 5" VARIABLE SPEED WET GRINDER 5/8" 11 SPINDLE 115 VOLTS

The most cost-effective and sophisticated WET polisher. Infinitely adjustable polishing speeds (1,000-2,800 RPM) make this product ideal for very sensitive materials and offers users maximum flexibility. The LW 603 VR is a two-handed tool and is commonly used as a large surface polisher.



MAKITA 9237C 7" POLISHER VARIABLE SPEED

MAKITA 9227CY 7" POLISHER VARIABLE SPEED 5/8" - 11 SPINDLE 0 - 3,000 RPM. Variable speed control dial enables user to match the speed to the application. Constant speed control maintains constant speed under load. Soft start feature for smooth start-ups and less fling-off. 3-prong plug to prevent static electricity accumulation. Easily converts to a sander.

Stone Fabrication & Supplies

Angle Grinders And Hand Tools



MAKITA 9564CV 4 1/2" VARIABLE SPEED ANGLE GRINDER

Grinding Wheel or Sanding Disc 4-1/2" Wire Cup Brush 3-1/2" No Load Speed (variable speed) 2,800 – 10,500 RPM. Spindle Thread 5/8" – 11 UNC AMPS 12 Lock-On Yes. Lock-Off No. Overall Length 11-3/4" Net Weight 5.3 lbs. Shipping Weight 7.7 lbs.



MAKITA 9565CV 5" ANGLE GRINDER VARIABLE SPEED

Grinding Wheel or Sanding Disc 5" Wire Cup Brush 3-1/2" No Load Speed (variable speed) 2,800 – 10,500 RPM Spindle Thread 5/8" – 11 UNC AMPS 12 Lock-On Yes. Lock-Off No. Overall Length 11-3/4" Net Weight 5.2 lbs. Shipping Weight 7.7 lbs.



MAKITA PW 5001C VARIABLE SPEED WATER FEED POLISHER

MAKITA PW 5001C VARIABLE SPEED WATER FEED POLISHER 2,000 – 4,000 RPM 5/8"-11 SPINDLE. Variable speed control dial enables user to match the speed to the application Soft start feature for smooth start-ups. Electronic speed control maintains constant speed under load.



MILWAUKEE STRAIGHT END GRINDER 5,500 RPM

A coated spindle housing make this heavy duty, Milwaukee Straight Grinder comfortable to hold on to while delivering an extra heavy duty 15 amps of power and 5500 RPM. Equipped with a hinged face plate with wing nut fasteners for easy wheel changes, this tool can accept up to 6 inch resinoid bond wheels. Wire brushes can also be attached for cleaning rust from work surfaces, as well as buffing wheels for polishing.



MILWAUKEE STRAIGHT END GRINDER 7,000 RPM

A coated spindle housing make this heavy duty, Milwaukee Straight Grinder comfortable to hold on to while delivering a full 12 amps of power and 7000 RPM. This tool can accept up to 5 inch resinoid bond wheels. Wire brushes can also be attached for cleaning rust from work surfaces as well as buffing wheels for polishing surfaces.



MILWAUKEE VARIABLE SPEED 7" POLISHER

Milwaukee Polishers are built with a powerful 11 amp motor that provides plenty of power to maintain the right speed. A trigger speed control switch allows speeds of 0-2800 rpm. This versatile model will accept 7 inch or 9 inch accessories. A spindle lock for convenient, quick accessory changes is standard. A QUIK-LOK® cord set allows quick detachment of the cord from the tool for tangle free carrying and storage.

Stone Fabrication & Supplies

Angle Grinders And Hand Tools



MILWAUKEE WORM DRIVE CIRCULAR SAW

5.0 Amp, 4,400 RPM Motor- delivers maximum cutting performance and does not bog down, even under heavy loads. Hardened steel worm gearing -provides maximum torque in the toughest applications Magnesium Construction durable, lightweight Heavy-Duty Composite Shoe- will not warp, bend or kick up a burr Exclusive Oil Site Glass- instantly gauge current oil level.



PSC-150 PNEUMATIC STONE CUTTER

2 HP Pneumatic Powered Motor with Speed Governor, Capable of Miter Cutting 1-1/4" Material With Ease, Kink-Free Water and Air- Hoses for Easy Maneuverability and Reducing Operator Fatigue, Great For Sink-Hole Cutting, Groove Cutting and Rodding Applications, Comes With An Eclipse II 6" Blade and A Rust Inhibitor Oil, Can Be Used Wet or Dry.



SKILSAW WORM DRIVE CIRCULAR SAW

Powerful 15 Amp motor. Impact resistant carbide blade for optimal use. Anti-sag lower guard reduces snags when making narrow cut-offs. 22 Amp switch and heavy gauge cord. Die-cast aluminum motor and gear housings for durability. Push button spindle lock for easy blade changes. Oil indicator level and relief bellows for long life. Two position saw hook for safe rafter placement.



WEHA BLIZZARD REAR EXHAUST CENTER WATER FEED AIR POLISHER

The Weha Blizzard Rear Exhaust Center Water Feed granite and stone Air Polisher is a premium quality air polisher designed to work in granite and stone fabrication shops 24 hours a day, 7 days a week. The Blizzard Granite Air polisher is a Rear Exhaust Air polisher that does not lose power during the granite and stone polishing process. The Blizzard Center Water Feed stone polisher comes with 2 hoses. 1 for air. 1 for water. Both feed from the back of the tool.

Booms and Slab Lifters



ABACO FORK LIFT SWING BOOM (AFJS-25)

Abaco Forklift SWING BOOM (AFJS-25) is ideal for moving hard to reach slabs. It is particularly designed for unloading closed top containers and for small factories where space is a critical. The Swing Arm has 5 lock points and various angles with length extended up to 2.7 yard (2.5m). Teaming up with Abaco lifter is the best way to unload containers.



ABACO FORKLIFT BOOM (AFJ-25)

MAXIMUM LOAD (FULLY EXTENDED): 1,100 POUNDS (500 KG) ABACO FORKLIFT BOOM (AFJ-25) Designed for use on 2 & 2.5 ton forklift trucks, the Forklift Boom offers versatility with maximum visibility for the driver. Fully extended, the Forklift Boom reaches up to 94 1/2 inches (2400 mm).



ABACO SCISSOR CLAMP SC 100 AL AUTO-RELEASE

ABACO SCISSOR CLAMP SC 100 AL Auto-Release is an invaluable tool for lifting slabs, barriers, curbs, median walls, and tomb stones. The jaws of the lifter are lined with long lasting and fully vulcanized natural rubber pads to ensure a safe and non-marking grip. Clamps are gravity controlled, open automatically in idle condition and closed when lifted. Opening: 3/8" to 3- 15/16". Weight Capacity: 1300kg (2860 lbs.)
Optional: White Grip Pads or Black Grip Pads.



ABACO SCISSOR CLAMP SC 150 MANUAL RELEASE

ABACO SCISSOR CLAMP SC 150 Manual Release is an invaluable tool for lifting slabs, barriers, curbs, median walls, and tomb stones. The jaws of the lifter are lined with long lasting and fully vulcanized natural rubber pads to ensure a safe and non-marking grip. Clamps are gravity controlled, open automatically in idle condition and closed when lifted.



ABACO SLAB LIFTER

ABACO SLAB LIFTER are part of a large line of Abaco Products offered by Eastern Marble & Granite Supply. STRONG AND SECURE · STRONG LIFTING PIN · LOWER OVERALL HEIGHT · STRAIGHT LIFT · LARGE GRIP RANGE · INCLUDES SWIVEL SHACKLE



BAICCHI SLAB TURNER CLASP LARGE

The Slab Turner Clasp is a slab lifter that is suspended on a cable that is wrapped around pulleys allowing the lifter to turn from vertical to horizontal while continuing to grip the slab. Baicchi Slab Turner Clasp Large is a slab lifter that is suspended on a cable that is wrapped around pulleys allowing the lifter to turn from vertical to horizontal while continuing to grip the slab.

Stone Fabrication & Supplies

Booms and Slab Lifters



CABLES FOR BUNDLES

Cables for Bundles Heavy Duty, 18 Ft. in length. Eyes on each end. 1 Pair. Weight capacity: 6,000 lbs. each one.



WEHA EP 600

Weha EP 600 Unipad Vacuum Lifter Pneumatic and Hand pump for Granite, Marble, Engineered Stone, Quartz, slabs, metal sheets, Glass Panels. The Weha EP 600 Unipad Vacuum Lifter Pneumatic and Hand pump. No compressor needed when used with the Hand pump. Load Capacity Horizontal: 1323 Lbs
Load Capacity Vertical: 661 Lbs. Suction Plate: 24" X 10" Weight: 40 Lbs.



WEHA RIBA 2 CABLE SLAB SCISSOR LIFTER

Weha Riba 2 Cable Slab Scissor Lifter 2646 lb. Capacity for Granite, Marble, Engineered Stone Slabs, Steel Plates, Concrete, Landscape Materials. The Weha Riba Series Cable Scissor Lifters are perfect for picking up any stone slab or steel plate from a horizontal position and lifting it to a vertical position.



WEHA RIBA 3 CABLE SLAB SCISSOR LIFTER

The Weha Riba Series Cable Scissor Lifters are perfect for picking up any stone slab or steel plate from a horizontal position and lifting it to a vertical position. Likewise, the Riba Series Cable Scissor lifters will take a Steel Plate or Slab and transition from a Vertical position and lower it to a horizontal position.



WOODS POWER GRIP AIR POWERED TILTING VACUUM LIFT

Standard Features: Vacuum gauge, Vacuum reserve tank, Vacuum line filter, Spring-mounted vacuum pads, Individual shutoffs to all vacuum pads, Flexible rubber pad rings, fBlow-off for quick release



WOODS POWER GRIP ELECTRIC POWERED TILTING VACUUM LIFT

Woods Power Grip Electric Powered Tilting Vacuum Lift is part of Eastern Marble & Granite Supplies line of Material Handling Equipment. Standard Pad Spread: 23-3/4" x 74-3/4" [60 cm x 190 cm] Number / Size of Vacuum Pads: 10 / 10" [25 cm] diameter pads with replaceable sealing rings Maximum Load Capacity: 1500 lbs [680 kg] Weight of Lifter: 425 lbs [193 kg] Standard Operating Power: 120 volts AC, 50/60 hertz, 12 amps(240 volts AC, 50/60 hertz, 6 amps also available)

Antiquing Brushes for Fabrication



ITALIAN CRAFTSMAN 4" CARBORUNDUM BRUSH 5/8"-11 FEMALE THREAD

Italian Craftsman Carborundum Brush for Leathering and Antiquing. For use on angle grinders with 5/8" – 11 male thread. Maximum 3,000 rpm's. Recommended to be used wet.



ITALIAN CRAFTSMAN FRANKFURT BRUSH SILICON CARBIDE BRISTLE

Italian Craftsman Frankfurt Bristle Brush Silicon Carbide These Frankfurt brushes are used for "Leathering or Antiquing" the face of marbles and limestones. For use on line machines, bed polishers and floor machines.



ITALIAN CRAFTSMAN FRANKFURT WIRE BRUSH

Frankfurt wire brush is used for smoothing the rough surface of "flamed finish" stones prior to doing the brushing. For use on line machines, bed polishers and floor machines.



ITALIAN CRAFTSMAN HOLDERS FOR FRANKFURT BRICKS

Italian Craftsman Holders for Frankfurt Bricks These holders are mounted on the drive plates of bed polishers, floor polishers and automatic line equipment to hold "Frankfurt Brick Segments."



TENAX 4" SNAIL LOCK DIAMOND BRISTLE BRUSH

Diamond Impregnated Bristle Brush used For Leathering, Antiquing & Texturing For Use On Angle Grinders and Hand Machines. Sizes: 36 GRIT, 46 GRIT, 60 GRIT, 120 GRIT, 220 GRIT, 300L GRIT, 400L GRIT, 600L GRIT, 800L GRIT



TENAX 5" SNAIL LOCK DIAMOND BRISTLE BRUSH

Diamond Impregnated Bristle Brush used For Leathering, Antiquing & Texturing. For Use On Angle Grinders and Hand Machines. Sizes: 36 GRIT, 46 GRIT, 60 GRIT, 120 GRIT, 220 GRIT, 300 GRIT, 300L GRIT, 400L GRIT, 600L GRIT, 800L GRIT

Bridge Saw Blades



ALPHA PROFESSIONAL TOOLS SILENCER III DIAMOND BLADE FOR ENGINEERED STONE

Bridge Saw Blade for Eng. Stone. Alpha Professional Tools® recognizes the need for a high quality engineered stone blade for bridge or table saws and brings this to the marketplace in the form of the Alpha® Silencer III for Engineered Stone. The Alpha® Silencer III is a technologically advanced blade that produces excellent cuts while achieving superior cost performance with reduced noise levels.



ALPHA PROFESSIONAL TOOLS SILENCER III DIAMOND BLADE FOR HARD GRANITE

Bridge Saw Blade for Porcelain Slab/Crystallized Glass. Alpha Professional Tools® recognizes the need for a high quality porcelain blade for bridge or table saws and brings this to the marketplace in the form of the Silencer III for Porcelain. The Alpha® Silencer III is a technologically advanced blade that produces excellent cuts while achieving superior cost performance with reduced noise levels. **\$406.65 - \$580.83**



ALPHA PROFESSIONAL TOOLS SILENCER III DIAMOND BLADE FOR PORCELAIN AND CRYSTALLIZED GLASS

Bridge Saw Blade for Porcelain Slab/Crystallized Glass. Alpha Professional Tools® recognizes the need for a high quality porcelain blade for bridge or table saws and brings this to the marketplace in the form of the Silencer III for Porcelain. The Alpha® Silencer III is a technologically advanced blade that produces excellent cuts while achieving superior cost performance with reduced noise levels. **\$322.75 - \$523.49**



ALPHA PROFESSIONAL TOOLS SILENCER III DIAMOND BLADE GENERAL PURPOSE FOR GRANITE

Bridge Saw Blade for Granite. Alpha Professional Tools® recognizes the need for a high quality granite blade for bridge or table saws and brings this to the marketplace in the form of the Alpha® Silencer III for Granite. The Alpha® Silencer III is a technologically advanced blade that produces excellent cuts while achieving superior cost performance with reduced noise levels. **\$399.10 - \$464.15**



ALPHA PROFESSIONAL TOOLS SILENCER III DIAMOND BLADE GENERAL PURPOSE FOR SOFT GRANITE

Bridge Saw Blade for Granite. Alpha Professional Tools® recognizes the need for a high quality granite blade for bridge or table saws and brings this to the marketplace in the form of the Alpha® Silencer III for Granite. The Alpha® Silencer III is a technologically advanced blade that produces excellent cuts while achieving superior cost performance with reduced noise levels. **\$388.40 - \$507.75**

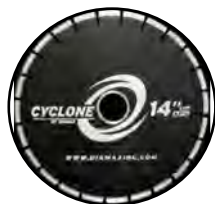


BLITZ 18" X 20MM 3DX ARIX TECHNOLOGY BRIDGE SAW BLADE FOR GRANITE AND ENGINEERED STONE

Weha Blitz 18" 3DX Granite Diamond Bridge Saw Blades have reset the standard of what the best diamond blades should compare to. Engineered with 3 dimensional pattern technology throughout the entire diamond segment, the Blitz 3DX Granite and Quartz Blade will foot print the most diamonds on stone at any given time. **\$375.00**

Stone Fabrication & Supplies

Bridge Saw Blades



CYCLONE LOW HORSE POWER SILENT CORE BLADE

Cyclone Low Horse Power Silent Core Blade have the following features. The Cyclone LHP Blade will cut more slabs than any other blade for a Low Horsepower saw. Designed for the Blue Ripper, Nuova Mondial Mec, Achille TSA or any portable track saw device. Constructed with a silent core to reduce noise pollution in the work place. **\$2,490.00**



CYCLONE S QUARTZITE SILENT CORE BLADE QZT

Cyclone S Quartzite Silent Core Blade QZT is part of our Bridge Saw parts and machinery selection and has the following features. Longest lasting Quartzite blade on the market, Provides a fast and clean cut on Quartzite. Designed for straight miter cuts. Feed rate: 4-6 ft/min Material: Quartzite, granite, and engineered stone **\$298.00 - \$380.00**



DIAMANT-D DIAMOND BLADES 10"

Diamant-D Diamond Blades 10" Standard Granite Blade Silent Core 9.5MM Segments **\$198.00**



DIAMANT-D DIAMOND BLADES 12"

Diamant-D Diamond Blades 12" Standard Granite Blade Silent Core 9.5MM Segments **\$249.00**



DIAMANT-D DIAMOND BLADES 14"

Standard Granite Blade Silent Core 9.5MM Segments **\$289.00**



DIAMANT-D DIAMOND BLADES 16"

Diamant-D Diamond Blades 16" Standard Granite Blade Silent Core 9.5MM Segments **\$369.00**



DIAMANT-D DIAMOND BLADES 18"

Diamant-D Diamond Blades 18" Standard Granite Blade Silent Core 9.5MM Segments **\$575.00**

Stone Fabrication & Supplies

Bridge Saw Blades



DIAMANT-D DIAMOND BLADES 20"

Diamant-D Diamond Blades 20" Standard Granite Blade Silent Core 9.5MM Segments **\$450.00**



DIAMANT-D DIAMOND BLADES 24"

Diamant-D Diamond Blades 24" Blade for Natural Quartz Silent Core 9.5MM Height Segment



DIAMANT-D DIAMOND BLADES 9.5MM HEIGHT SEGMENT

DIAMANT-D DIAMOND BLADES GROOVING WHEEL FOR GRANITE

12" Diameter x 1" Wide, 14" Diameter x 1" Wide, 14" Diameter x 1/4" Wide



DIAMANT-D DIAMOND BLADES LAMPO 10" GRANITE BLADE SILENT CORE 18MM HEIGHT SEGMENT

10" GRANITE BLADE



DIAMANT-D DIAMOND BLADES LAMPO 10" GRANITE BLADE STANDARD CORE 18MM HEIGHT SEGMENTS

10" GRANITE BLADE



DIAMANT-D DIAMOND BLADES LAMPO 12" GRANITE BLADE SILENT CORE 18MM HEIGHT SEGMENTS

12" GRANITE BLADE

Stone Fabrication & Supplies

Bridge Saw Blades



[DIAMANT-D DIAMOND BLADES LAMPO 14" GRANITE BLADE SILENT CORE 18MM HEIGHT SEGMENTS](#)

14" GRANITE BLADE



[DIAMANT-D DIAMOND BLADES LAMPO 16" GRANITE BLADE SILENT CORE 18MM HEIGHT SEGMENTS](#)

16" GRANITE BLADE



[DIAMANT-D DIAMOND BLADES LAMPO 18" GRANITE BLADE SILENT CORE 18MM HEIGHT SEGMENTS](#)

18" GRANITE BLADE



[DIAMANT-D DIAMOND BLADES LAMPO TITANIUM 12" SILENT CORE 18MM HEIGHT SEGMENTS](#)

12" SILENT CORE 18MM HEIGHT SEGMENTS



[DIAMANT-D DIAMOND BLADES LAMPO TITANIUM 14" SILENT CORE 18MM HEIGHT SEGMENTS](#)

14" SILENT CORE 18MM HEIGHT SEGMENTS



[DIAMANT-D DIAMOND BLADES LAMPO TITANIUM 16" SILENT CORE 18MM HEIGHT SEGMENTS](#)

16" SILENT CORE 18MM HEIGHT SEGMENTS



[DIAMANT-D DIAMOND BLADES LAMPO TITANIUM 18" SILENT CORE 18MM HEIGHT SEGMENTS](#)

18" SILENT CORE

Stone Fabrication & Supplies

Bridge Saw Blades



DIAMANT-D DIAMOND BLADES LAMPO TITANIUM 18" SILENT CORE 18MM HEIGHT SEGMENTS

18" SILENT CORE



DIAMANT-D DIAMOND BLADES VX-3 TITANIUM 14" V-SEGMENTS SILENT CORE 18MM HEIGHT SEGMENTS

14" V-SEGMENTS SILENT CORE



DIAMANT-D DIAMOND BLADES VX-3 TITANIUM 16" V-SEGMENTS SILENT CORE 18MM HEIGHT SEGMENTS

16" V-SEGMENTS SILENT CORE



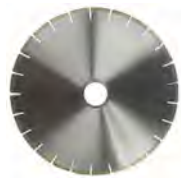
DIAMANT-D DIAMOND BLADES VX-3 TITANIUM 18" V-SEGMENTS SILENT CORE 18MM HEIGHT SEGMENTS

18" V-SEGMENTS SILENT CORE



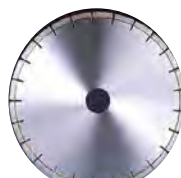
INDIAM DIAMOND BLADE FOR GRANITE 10 MM HEIGHT SEGMENTS 60MM-50MM BORE

High quality segmented diamond blades for cutting granites, engineered stone and other hard natural stones.



INDIAM DIAMOND BLADE FOR GRANITE 24" PREMIUM CORE 10 MM HEIGHT SEGMENTS 60MM-50MM BORE

High quality segmented diamond blades for cutting granites, engineered stone and other hard natural stones.



INDIAM DIAMOND BLADE FOR MARBLE 7 MM HEIGHT SEGMENTS 60MM-50MM BORE

High quality segmented diamond blades for cutting marbles, limestone, travertine, onyx and other soft natural stones. Silent core for less noise while cutting. For use on bridge saws.

Stone Fabrication & Supplies

Bridge Saw Blades

ITALIAN CRAFTSMAN – GROOVING WHEEL

Italian Craftsman Grooving wheel is also part of a complete selection of Italian Craftsman products.



WEHA MATRIX S DIAGONAL DIAMOND BRIDGE SAW BLADE 18 MM HEIGHT SEGMENTS 60 MM ARBOR

The Weha Matrix S Diamond Bridge Saw Blades are premium diagonal layered diamond blades designed to cut fast, clean and quite.



WEHA WHITE LION BLADE

Weha White Lion Blade for Quartzite Hard Granites and Engineered Stone, White Lion Quartzite Diamond Bridge Saw blades, 20mm Height ARIX Layered Diamond Technology. Outstanding in Quartzite, Granite, and Engineered Stone. German Silent core Steel to run quite and smooth.

Stone Fabrication & Supplies

Core Bits



ADAPTERS

To adapt 5/8"-11 threaded angle grinder to 1/2" gas threaded core bits. For conventional routers to adapt shaping bits with 22mm flange To Adapt 1/2" Straight Shaft To 5/8"-11" Male Thread



ALPHA PROFESSIONAL TOOLS 1/2" CORE DRILL BIT WET 5/8"-11 FEMALE THREAD

The Alpha® Wet Core Drill Bit is designed to work on a drill press with a water swivel attachment or free-hand using a wet polishing tool such as the AIR-658, AWP-158 or VSP-120. Since it must be used wet, a tool with a central water-feed or a water swivel is necessary. The convenience of a portable hand polishing tool makes the Alpha® Wet Core Drill Bit very adaptable for a variety of applications.



ALPHA PROFESSIONAL TOOLS DRY CORE DRILL 5/8" - 11 FEMALE THREAD

Not only is this convenient but it also increases productivity by cutting down on the amount of clean up needed when using water. Available in 1/2", 3/4", 1", 1-1/4", 1-3/8", 1-1/2" and 2" sizes. Choose the Alpha® Dry Core Drill Bit where the convenience of dry application is essential. Easy preparation with minimum clean-up; Fits on most popular high-speed grinders; Very fast cutting on granite and engineered stone.



APEXX SEGMENTED CORE BITS

Apexx Segmented Core Bits are used for drilling holes with water in shop or at job site. They provide a consistent performance with satisfactory life on both granite and engineered stone.



BAICCHI PORTABLE DRILL PRESS

The "Baicchi" Portable Drill Press is designed to hold any variable speed drill. (Drill not included) The drill press is compact and sturdy. It has a suction cup on the bottom for holding the unit in place.



DIAMANT-D DIAMOND CORE DRILL BIT 5/8"-11 FEMALE THREAD WET

1" CORE DRILL BIT, 1 - 1/2" CORE DRILL BIT, 1 - 1/4" CORE DRILL BIT, 1 - 3/4" CORE DRILL BIT, 1 - 3/8" CORE DRILL BIT, 1/2" CORE DRILL BIT, 1/4" CORE DRILL BIT, 2" CORE DRILL BIT, 2 - 1/2" CORE DRILL BIT, 3/4" CORE DRILL BIT, 3/8" CORE DRILL BIT, 5/8" CORE DRILL BIT.



DIAMAX CYCLONE WET/DRY CORE BIT 5/8"-11 FEMALE THREAD

Specially designed T-segment increases durability and minimizes segment loss, Tested by an independent laboratory for life and speed. Proven to offer the most value over all other core bits on the market, Perfect for use in the field when water is not an option, Use wet to prolong the segment life, 5/8"-11 thread [m18x2]

Stone Fabrication & Supplies

Core Bits



DIAMAX CYCLONE WET/DRY NON-CORING BIT 5/8" -11 FEMALE THREAD

DIAMAX CYCLONE WET/DRY NON-CORING BIT 5/8" -11 FEMALE THREAD • New dry segment matrix allows these non-core drill bits to perform under high heat conditions • For best performance use at 8000 RPM with center-fed water • 5/8" -11 thread



ELEMENT X DRY CORE BITS

Element X Dry Core Bits are a faster version of our Element Dry Core Bit. Brazed diamond inside and outside of barrel prevents the barrel from overheating. Diameters: 1-1/4", 1-3/8", & 1-1/2" Threads: 5/8"-11 or M14 Super fast drilling speed and clean cut Dry or wet use



INDIAM DIAMOND CORE BITS FOR GRANITE 1/2 GAS MALE THREAD

1/2 Gas male thread for use with water swivels with 1/2 Gas female connection. These bits can also be used on CNC machines and sink bowl cutting machines. Use of an adapter may be necessary.



WEHA CERAMICA PORCELAIN & CERAMIC CORE BITS

Weha Porcelain and Ceramic Core Drill Bits have been designed and built for the all types of ceramic and porcelain materials. But especially for the thicker ceramic and porcelain slabs such as Lapitec and Cosentino Dekton slabs..

Stone Fabrication & Supplies

Countertop Installation Accessories



[Alpha Professional Tools G-Tape](#)

Alpha Professional Tools G-Tape, This tape is waterproof and tears straight and easily by hand. It is highly weather/UV resistant and can be used in temperatures ranging from -40F to 200°F. The ability to reposition it makes it great for quick repairs on all kinds of surfaces. The best part is that, although the adhesion is strong, it does not leave any residue when removed. Use this tape on all your projects with great results.



[BRASS WIRE 1/8 inch THICK](#)

BRASS WIRE 1/8 inch THICK is Sold in rolls by the pound. This product is part of our Countertop Installation Accessories In our Stone Fabrication Supplies category of products by Eastern Marble & Granite Supplies..



[C. R. LAURENCE TILE SHIMS HORSESHOE STYLE](#)

Color Coded for Convenience. Simplifies All Leveling Requirements. Packed in Convenient Sleeves and Tubs Economical. Three Standard Lengths.



[FIBERGLASS RODDING](#)

FIBERGLASS RODDING 3/8" X 1/8" 300 FOOT LENGTH



[GROVES DOLLIE](#)

Stone Dolly. Maneuvers easily indoors and out. Pneumatic tires reduce breakage caused by vibration. 12" width measured from outside of wheels adds stability. The channel is 6.5" from the ground 1,000 lb. capacity using 10" tires and 4" casters.



[PEARL ABRASIVES ELECTROPLATED DIAMOND BLADE FINE CUTTING](#)

Advanced electroplated bond for a fast, clean chip-free cut. High diamond concentration for extra long life. Ideal for cutting marble and travertine. Wet or dry cutting.

Countertop Installation Accessories



RAZOR BLADES SINGLE EDGE INDIVIDUALLY WRAPPED

This Single Edge Razor Blade is top quality, industrial grade, .009" (.23 mm) thick, Carbon C-1095 surgical steel, precision-honed for extra sharpness. It delivers durability along with the exacting, quality cut that professionals demand. Packed 100 each per box, there are 50 boxes per case. Each Blade is individually wrapped to protect the edge until you are ready to use it.

SINK ANCHORS

Sink Anchors Screws 3/4" Long 100 per Bag.

SINK DISHWASHER STUD

Sink Dishwasher Stud has the following specifications. 50 PCS RECTG #11000.15 With Screws 409.



SUPER METAL MARKER WHITE

Super Met-a[®] Squeeze Action Paint Markers



WEHA CARRY CLAMPS

Weha Stone Carry Clamp Features: Use 2 or more workers to safely lift & carry tops. 440 lbs. capacity (220 lb. capacity per stone carry clamp). Will fit up to 2" (5cm) material. Replaceable rubber pads. The heavier the load, the stronger it clamps. Will not rust. Sold in pairs. Non-marking foam pads protect stone surface

Drum Wheels Cup Wheels and Grinding Stones



ALPHA PROFESSIONAL TOOLS DIAMOND CUP WHEEL

Grinding Wheel for Natural and Eng. Stone Alpha® DW Style is an aggressive grinding wheel specially formulated to grind and shape natural stone products. They perform exceptionally well on most granites and harder materials. Alpha® DW Style can be used on most popular angle grinders. They are the ideal grinding wheels to profile edges, smooth out inside sinkhole cuts, smooth rough surfaces, prepare surfaces for lamination, and simple heavy material removal. Alpha® DW Style is well known for its excellent performance on red granites, which are among the hardest granites available today.



CUP WHEEL 7 INCHES

Cup Wheel 7 inches. Course. 5/8"-11 female thread. Used on concrete and stone. Use on slow to medium speed grinder (2,000-6,500 rpm). Wet or dry.



CYCLONE DRUM WHEEL 2" DIAMETER X 2" HIGH 5/8" - 11 FEMALE THREAD

Cyclone Polishing Drum Wheels • Edge polishing for sink cut-outs • Recommended use: Oscillate up and down for proper even drum wear • Rubber drum increases tread life & reduces vibration • 5/8" - 11 female thread optional: (M18 x 2 thread).



CYCLONE DRUM WHEEL BUFF FOR POLISHING

Cyclone Polishing Drum Wheels • Edge polishing for sink cut-outs • Recommended use: Oscillate up and down for proper even drum wear • Rubber drum increases tread life & reduces vibration • 5/8" - 11 female thread Optional: (M18 x 2 thread).



DIAMANT-D DIAMOND 4" CUP WHEEL 4" SNAIL LOCK ATTACHMENT GRAPHITE

4" CUP WHEEL 4" SNAIL LOCK ATTACHMENT.



DIAMANT-D DIAMOND 4" CUP WHEEL 5/8" - 11 FEMALE THREAD

4" CUP WHEEL COURSE, 4" CUP WHEEL COURSE - BEVELED, 4" CUP WHEEL FINE, 4" CUP WHEEL MEDIUM

Drum Wheels Cup Wheels and Grinding Stones



DIAMAX CUTTING TIP M12 THREAD (HALF GAS) 23MM X 20MM

For use on sink cut-out machines • Tapered bits have M12 thread (1/2 gas male thread) • New Super Cyclone screw on tip is taller and lasts longer for more cutouts with less glazing issues.



DRESSING HANDLE WITH CUTTERS

Dressing handle with cutters have replacement wheels (10) per box.



GRINDING WHEEL 4" SILICON CARBIDE

1/2 Gas male thread for use with water swivels with 1/2 Gas female connection. These bits can also be used on CNC machines and sink bowl cutting machines. Use of an adapter may be necessary.



ITALIAN CRAFTSMAN GENERIC CUP WHEEL 4" DIAMETER 5/8" - 11 FEMALE THREAD

COURSE GRIT Diamond grinding wheel for heavy stock removal on granite, marble and concrete. FINE GRIT Diamond grinding wheel for minor stock removal or for following up the course grit cup wheel on granite, marble and concrete. For use on angle grinders. Recommended RPM's range from 2,000 - 6,500.



PEARL ABRASIVES 4" DIAMOND CUP WHEEL 5/8" - 7/8" CENTER HOLE COURSE GRIT

Coarse. Turbo design for fast, smooth grinding. High diamond concentration for extra long life. Designed to be used on a variety of materials. Wet or dry grinding. Application: For Granite, Marble, Concrete, Brick, Block, Natural Stone, Refractory Material, Soft Stone, Sand Stone. Max RPM: 13,700.



PEARL ABRASIVES 4" DIAMOND CUP WHEEL 5/8" - 7/8" CENTER HOLE MEDIUM GRIT

Medium. Turbo design for fast, smooth grinding. High diamond concentration for extra long life. Designed to be used on a variety of materials. Wet or dry grinding.: 13,700.



PEARL ABRASIVES 4" DIAMOND CUP WHEEL 5/8"-11 FEMALE THREADED CENTER HOLE COURSE GRIT

4" x 5/8"-11 Pearl P5™ General Purpose Turbo Cup Wheel, Coarse. Turbo design for fast, smooth grinding. High diamond concentration for extra long life. Designed to be used on a variety of materials. Wet or dry grinding.

Drum Wheels Cup Wheels and Grinding Stones



PEARL ABRASIVES 4" DIAMOND CUP WHEEL 5/8"-11 FEMALE THREADED CENTER HOLE FINE GRIT

4 x 5/8-11 Pearl P5™ General Purpose Turbo Cup Wheel, Coarse. Fine. Turbo design for fast, smooth grinding. High diamond concentration for extra long life. Designed to be used on a variety of materials. Wet or dry grinding.



PEARL ABRASIVES 4" DIAMOND CUP WHEEL 5/8"-11 FEMALE THREADED CENTER HOLE COURSE GRIT

4" x 5/8"-11 Pearl P5™ General Purpose Turbo Cup Wheel, Coarse. Medium. Turbo design for fast, smooth grinding. High diamond concentration for extra long life. Designed to be used on a variety of materials. Wet or dry grinding.



WEHA PITBULL HYBRID DIAMOND RESIN CUP WHEEL RIGID ALUMINUM 30, 50, 100 & 200 GRIT WET OR DRY

Grind and shape with ZERO chipping! The Weha Pitbull Diamond Resin Cupwheel is a New Hybrid Resin Polishing pad with a harder bond to perform like a resin filled diamond cup wheel. However, the Pitbull Resin Cupwheel will grind and shape with zero chipping on the material.

Edge Polishing Pads For Fabrication



4 INCH COPPER WONDER

4 inch Copper wonder is a 4" Velcro Backed Copper Diamond Disc, For Use On Angle Grinders Removes Deep Scratches Fast While Leaving The Surface Smooth



4" WEHA QUARTZ POLISHING PADS

The Weha Quartz polishing pads are made using the Weha exclusive Geometric Water Displacement Technology Pattern design. This Geo Pattern design allows water to flow across and through the pad more efficiently, keeping the pad from hydroplaning and allowing it to "bite" into the stone. This means the pad achieves a polish faster than conventional brick pattern polishing pads.



ALPHA PROFESSIONAL TOOLS CERAMICA BLACK BUFF POLISHING DISC 4" VELCRO BACKED

Ultimate Wet Granite Final Polishing. Alpha® Ceramica Buff is the key to the difference from a standard polished edge to a deep glossy finish. Unlike the rest of the Alpha® Ceramica product line, a large amount of water is not required.



ALPHA PROFESSIONAL TOOLS CERAMICA BUFF POLISHING DISC 3" VELCRO BACKED

Ultimate Wet Granite Final Polishing. Alpha® Ceramica Buff is the key to the difference from a standard polished edge to a deep glossy finish. Unlike the rest of the Alpha® Ceramica product line, a large amount of water is not required. The utilization of a natural process to bring out the glossy shine is exclusive to these pads.



ALPHA PROFESSIONAL TOOLS CERAMICA BUFF POLISHING DISC 5" VELCRO BACKED

Ultimate Wet Granite Final Polishing. Alpha® Ceramica Buff is the key to the difference from a standard polished edge to a deep glossy finish. Unlike the rest of the Alpha® Ceramica product line, a large amount of water is not required. The utilization of a natural process to bring out the glossy shine is exclusive to these pads..



ALPHA PROFESSIONAL TOOLS CERAMICA DRY ASSORTMENT KIT 60-3000 GRITS

Alpha Professional Tools CERAMICA DRY 4" Assortment Kit 60-3000 grits. Alpha® has expanded its line of polishing pads to now include a dry version of the superior Ceramica Resin. Ceramica Dry is perfect for all natural stones and cement-based composites such as concrete and terrazzo.

Edge Polishing Pads For Fabrication



ALPHA PROFESSIONAL TOOLS CERAMICA EX DIAMOND DISCS FOR ENGINEERED STONE

Wet Polishing of All Stones. Alpha®, the manufacturer of the "Original Ceramica Polishing Discs", has created the next generation of polishing discs, Ceramica EX. With the proliferation of engineered stones, Alpha® recognized the need for polishing discs that could work effectively on these challenging new surfacing products.



ALPHA PROFESSIONAL TOOLS CERAMICA RESIN BOND DIAMOND DISC 3" VELCRO BACKED

Tile contractors are impressed by the variety of applications in which Alpha® Ceramica Resin discs can be used. Monumentalists love the polish they can achieve. Heat sintered in a mold with a durable resin compound, these discs are extremely flexible with consistent performance.



ALPHA PROFESSIONAL TOOLS CERAMICA RESIN BOND DIAMOND DISC 4" VELCRO BACKED

Alpha® Ceramica Resin discs are the best in the industry and are cost-effective versus the alternatives. The original Alpha® Ceramica Resin discs are available in 150, 300, 500, 1000, 2000, and 3000 grits. This grit sequence is specifically formulated to provide the best possible finish.



ALPHA PROFESSIONAL TOOLS CERAMICA RESIN BOND DIAMOND DISC 5" VELCRO BACKED

Alpha® Ceramica Resin discs are the best in the industry and are cost-effective versus the alternatives. The original Alpha® Ceramica Resin discs are available in 150, 300, 500, 1000, 2000, and 3000 grits. This grit sequence is specifically formulated to provide the best possible finish.



ALPHA PROFESSIONAL TOOLS CERAMICA VITRIFIED DIAMOND DISC 5" VELCRO BACKED

Alpha® Ceramica Vitrified discs are ideal for the bullnosed or profiled edge, but also work very well on all curved edges. Only Alpha Professional Tools® offers this advanced style disc. Available in 60, 150 and 300 grits, Alpha® Ceramica Vitrified discs are aggressive and long lasting.



ALPHA PROFESSIONAL TOOLS SOLID FELT WITH VELCRO

Felt Wheels For Use with Polishing Powders. The Alpha® Felt Wheel is a very popular material for the final buff process in stone fabrication. Alpha® Felt Wheels are hook and loop backed buffing wheels designed for use with polishing powders, polishing pastes, and polishing bars to bring out a deep glossy finish on marble and delicate granite edges such as ogees & bullnoses.



ITALIAN CRAFTSMAN 200 GRIT COPPER WONDER

For Use On Angle Grinders Smoothing Grit That Leaves The Surface Ready To Transition Into Resin Discs. 4" inch, 5" Inch .

Stone Fabrication & Supplies

Polishing



ITALIAN CRAFTSMAN 5" 50 GRIT COPPER WONDER

For Use On Angle Grinders Removes Deep Scratches Fast While Leaving The Surface Smooth.



ITALIAN CRAFTSMAN GENERIC DIAMOND PADS 3" WET POLISHING PADS FOR NATURAL STONE

Velcro backed polishing pads for natural stone. Use wet.



ITALIAN CRAFTSMAN GENERIC DIAMOND PADS 4" WET POLISHING PADS FOR NATURAL STONE

Velcro backed polishing pads for natural stone. Use wet.



ITALIAN CRAFTSMAN GENERIC DIAMOND PADS 7" WET POLISHING PADS FOR NATURAL STONE

Velcro backed polishing pads for natural stone. Use wet.



ITALIAN CRAFTSMAN NEW TECHNOLOGY DIAMOND DISCS 4" VELCRO BACKED POLISHING PADS

New Technology Diamond Disc Created with the latest improvements in the formulation of the bond. 4" New Technology Diamond Discs come in these grit sizes. 50, 150, 300, 500, 1000, 2000, and 3000.



MUSTANG 3 STEP POLISHING PADS

Mustang 3 Step polishing pads are made with white resin making it excellent for all colors of engineered stone. Works great on marble and granite as well. Diameter: 4", Resin thickness: 3mm, RPM: 4,000 Maximum, Dry or wet use on marble and granite. Wet use only on engineered stone.



MUSTANG D SERIES POLISHING PADS

MUSTANG D SERIES POLISHING PADS provide stone fabrication professionals with excellent polishing & long life. Premium Quality. Very flexible. Works great on all marble & granite. Diameter: 4" Grit: #50, #100, #200, #400, #800, #1500, & #3000. RPM: 3,000 Maximum. Dry or wet use



MUSTANG DRY POLISHING PADS

Mustang Dry Polishing Pads have been used for many years, and are the favorite choice for dry polishing marble and natural stone. Premium Quality. Very flexible.. Works great on all marble & granite. Diameter: 4". Grit: #50, #100, #200, #400, #800, #1500, & #3000 RPM: 3,000 Maximum Dry or wet use.

Stone Fabrication & Supplies

Edge Polishing Pads For Fabrication



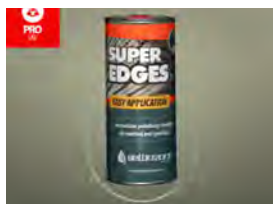
MUSTANG H SERIES POLISHING PADS

MUSTANG H SERIES POLISHING PADS are made with white resin making it excellent for all colors of engineered stone. Works great on marble and granite as well. Diameter: 4" Resin thickness: 3mm Grits: #50, #100, #200, #400, #800, #1500, & #3000 RPM: 4,000 Maximum. Wet use only



MUSTANG X 3 STEP POLISHING PADS

MUSTANG X 3 STEP POLISHING PADS are made with light color resin making it safe for all kinds of stone. Excellent polishing and long life. Diameter: 4". Resin thickness: 3mm. RPM: 4,000 Maximum. Dry or wet use on marble and granite.. Wet use only on engineered stone.



SUPER EDGES 750 ML

Super Edges 750 ML is used for polishing the edges of marble granite and stone. Eastern Marble & Granite Supply offers a wide range of Polishing Powders and compounds suitable for Marble and Stone and other Natural Surfaces.



TENAX 5" SNAIL LOCK W QUARTZ AUTOMATED EDGE POLISHING WHEELS

New Tenax automated edge polishing wheels are excellent on all materials including quartz, granite, marble, porcelain and ceramic. They can be used for either a straight edge or a bullnose edge. Designed with colored holders for easy ID, they are available in grits 60, 120, 220, 400, 600, 800, 1200, 1500, 2000, 3000, and 5000. 5"



TRIO PADS, 3 STEP POLISHING PADS

Trio Pads, 3 Step Polishing Pads. The end result with the Weha 3 Step Hybrid Diamond Polishing Pads: Better quality finish than traditional 7 step pads. 40%-60% faster shop production. 1 pad to polish marble, granite, quartz stone. Priced at the traditional 7 step quality polish pad price



WEHA 4" XUBI DRY HONEYCOMB DIAMOND POLISHING PAD

These dry diamond polishing pads are made to be used on practically any natural stone: granite, marble, limestone, travertine, etc. Weha Honeycomb dry diamond polishing pads dissipate heat very well, cut fast, and create a high gloss polish.



WEHA TRILOGY 3 STEP

Weha Trilogy 3 Step Set of 3 or Individual Diamond Polishing Pads for Black, Brown, Gray Engineered Stone. Excellent on light ES, Quartz, Quartzite, Granite, Marble. SET OF 3. Weha Exclusive Geo Pattern Design.

Fabrication Tables and A-Frames



GROVES 72" SQUARE POST 2.5" x 2.5" x 72" HIGH

Extra posts for 9,000 lb. Heavy Duty Bundle Rack.



GROVES CASTER KIT FOR TR-10

Optional caster package consists of 8" diameter roller bearing wheels rated at 2,000 lbs. each. Two swivel casters with brakes on one end and two rigid on the other.



GROVES CASTER KIT FOR TR-4482 AND TR-4496

Optional caster package consists of 8" diameter roller bearing wheels rated at 1,000 lbs. each. Two swivel casters with brakes on one end and two rigid on the other.



GROVES ECONO A-FRAME 60"

Heavy duty powder coated finish. Ships knocked down. Ledge Length 20.5" 6" spread on top of A. 60" Long x 60" Wide x 58" High. Heavy duty, 146 lb. steel A-Frame rack with a load capacity of 24,000 lbs., 12,000 lbs. per side. Bottom U-channel is 4" wide with 1" side ledges and is designed to hold wood 2 x 4.



GROVES FABRICATION STAND

Adjustable to any height from 36" to 42". Collapsible for easy transport and storage. Rubber mounted on top prevents sliding and scratches. Heavy duty powder coated finish. Adjustable to any height from 36" to 42". Collapsible for easy transport and storage. Rubber mounted on top prevents sliding and scratches. Heavy duty powder coated finish.



GROVES FABRICATION TABLE FREE STANDING

84" LONG X 24" WIDE X 43" HIGH. HDT84F Freestanding Heavy Duty Fabrication Table – HDT84F. Durable rubber is mounted on the top of the table to protect material. Freestanding units come with four legs that have leveling feet.



GROVES FABRICATION TABLE MOBILE, CASTERS

84" LONG X 24" WIDE X 43" HIGH. The GROVES FABRICATION TABLE MOBILE, CASTERS is a Mobile Heavy Duty Fabrication Table – HDT84M is part of our Material Equipment and Handling Supplies Product line featured at Eastern Marble and Granite Supply. This piece of equipment is a Durable rubber is mounted on the top of the table to protect material.



GROVES HEAVY DUTY BUNDLE RACK 6,000 LBS. CAPACITY

Heavy Duty Bundle Rack (6,000 lb. capacity) for storing complete bundles of slabs or thick slabs that are very heavy. Outside rails have 2" square holes spaced 4" apart on the top. A steel plate with identical holes is welded and boxed inside the rails, 1" up from the bottom. 2" square tube posts, 60" long, support the stone and 2" square rubber post caps are used to prevent scratches. (Caps not included, \$1.00 ea.)



Fabrication Tables and A-Frames



GROVES HEAVY DUTY TRANSPORT RACK 82" X 44" X 48" 4,000 LBS. CAPACITY

Transport Rack. 4,000 Pound capacity. Designed for transporting and storing product in your shop or on the job. Fork lift hoops mounted on sides. Bottom pads and uprights have full length rubber strips. Quick release mounting pins change the Transport Rack from mobile to stationary in less than a minute with the optional CK-4 Caster Kit. Hot dip galvanized finish.



GROVES POST 60" (5 FEET)

Extra posts for 6,000 lb. Heavy Duty Bundle Rack.



GROVES POST CAPS 2.5" SQUARE

Rubber caps for 72" posts. 2.5" X 2.5".



GROVES SINGLE SIDED TRUCK RACK 96" LONG X 24" WIDE X 63" HIGH

Single Sided Truck Rack. 60" Load Height. Heavy duty construction fabricated with 1.5" square steel tubing. Stronger than competitive models. Rubber strips mounted on bottom and back supports. Uprights mount in slotted holes for full depth adjustments. Hold downs have full length rubber strips and quick release straps. Heavy duty powder coated finish. Ships knocked down, top A-Frame assembly is one piece bolted to the frame to save on freight costs.



GROVES TILT TABLE CART

72" Long x 32" Wide x 36"-42" High WITH FOUR 5" LOCKING SWIVEL CASTERS. Tilt Table Cart. Four swivel 5" diameter casters. Four heavy duty foot operated locks prevent movement while fabricating. Heavy duty powder coated finish. Ships knocked down for freight savings. 600 Pound capacity



GROVES UNIVERSAL STORAGE SYSTEM

Outside rails have 1" diameter round holes spaced every 3". A secondary plate with identical holes is located below the top of the rail, 1" from the bottom. Rails are 6" wide x 3" high x 60" long and can butt together for desired length. Posts are 1" diameter steel coated with a galvanized finish. Posts can be removed for easy loading and unloading of product. Easily store cutoffs, finished products, remnants, vanity tops in a convenient organized manner. SAFETY WARNING: Maximum weight allowed per opening is 500 lbs. when using 2 x 4. Parts included in package: (2) 5" Rails (USS-R0), (30) 40" Posts (USS-P). For a total of 15 openings.

Stone Fabrication & Supplies

Fabrication Tables and A-Frames



GROVES UNIVERSAL STORAGE SYSTEM OUTSIDE RAIL

Outside rails are constructed of extruded aluminum, to provide strong, but lightweight storage solution.. Outside rails are designed with slots to hold 2 x 4. Outside rails have 1" diameter round holes spaced every 3". A secondary plate with identical holes is located below the top of the rail, 1" from the bottom. Rails are 6" wide x 3" high x 60" long and can butt together for desired length.



GROVES UNIVERSAL STORAGE SYSTEM POST

Universal Storage System Post. Universal Storage System Post (USS-P). Posts are 1" diameter steel coated with a galvanized finish. Posts can be removed for easy loading and unloading of product. Heavy Duty 1" O.D. 40"high Post.



WEHA 8 FT 96" x 43" x 68" LARGE DOUBLE SIDED A FRAME

For Granite, Marble, Quartz, Natural, Engineered Stone, Dekton, Counter Tops. Mustang 3 Step polishing pads are made with white resin making it excellent for all colors of engineered stone. Works great on marble and granite as well. Diameter: 4", Resin thickness: 3mm, RPM: 4,000 Maximum, Dry or wet use on marble and granite. Wet use only on engineered stone.

Heavy Duty Shop Carts



GROVES HEAVY DUTY SHOP CART

Groves Heavy Duty Shop Cart is part of our Material Handling and Equipment Supply Product line at Eastern Marble & Granite Supply.

Stone Fabrication & Supplies

Planing Wheels / Polishing



DIAMANT-D DIAMOND BLADES GROOVING WHEEL FOR GRANITE

12" DIAMETER x 1" WIDE, 14" DIAMETER x 1" WIDE, 14" DIAMETER x 1/4" WIDE

ITALIAN CRAFTSMAN - GROOVING WHEEL

Italian Craftsman Grooving wheel is also part of a complete selection of Italian Craftsman products.



ITALIAN CRAFTSMAN PLANING WHEEL

Can be used to grind down the back of slabs. For use on bridge saws.



ALPHA PROFESSIONAL TOOLS CERAMICA BUFF POLISHING DISC 3" VELCRO BACKED

Ultimate Wet Granite Final Polishing. Alpha® Ceramica Buff is the key to the difference from a standard polished edge to a deep glossy finish. Unlike the rest of the Alpha® Ceramica product line, a large amount of water is not required. The utilization of a natural process to bring out the glossy shine is exclusive to these pads.

Polishing



5 EXTRA POLISHING WHEEL 10"

Ultimate Wet Granite Final Polishing. Alpha® Ceramica Buff is the key to the difference from a standard polished edge to a deep glossy finish. Unlike the rest of the Alpha® Ceramica product line, a large amount of water is not required. The utilization of a natural process to bring out the glossy shine is exclusive to these pads..



ABRASIVE GRIT WHEEL 10" DIAM

24 GRIT, 16 GRIT, 36 GRIT, 60 GRIT, 120 GRIT, 220 GRIT, 320 GRIT, 600 GRIT



ABRASIVE TECHNOLOGY DIA-GLO BUFFING COMPOUND FOR GRANITE (FOR DARK COLORED GRANITE)

Dia-Glo™ brand buffing compounds are formulated to achieve the best possible finish on stone surfaces. Easy to use, they quickly produce a mirror-like finish. These compounds can be used in stone fabricating shops, for floor restoration and for maintenance buffing.

Planing Wheels / Polishing



ABRASIVE TECHNOLOGY DIA-GLO BUFFING COMPOUND FOR GRANITE

(FOR LIGHT COLORED GRANITE)

Dia-Glo™ brand buffing compounds are formulated to achieve the best possible finish on stone surfaces. Easy to use, they quickly produce a mirror-like finish. These compounds can be used in stone fabricating shops, for floor restoration and for maintenance buffing. The Dia-Glo M™ brand compound is formulated for marble surfaces, and also performs well on terrazzo and agglomerated marble products.



ABRASIVE TECHNOLOGY DIA-GLO BUFFING COMPOUND FOR MARBLE (GREEN IN COLOR)

Dia-Glo™ brand buffing compounds are formulated to achieve the best possible finish on stone surfaces. Easy to use, they quickly produce a mirror-like finish. These compounds can be used in stone fabricating shops, for floor restoration and for maintenance buffing.



ALPHA PROFESSIONAL TOOLS SUMMIT FINAL POLISH 10"

Fabricators love the extremely high gloss they achieve with these wheels. Monument producers appreciate these wheels for the variety of surfaces they can polish. The Alpha® Summit Final Polish wheels utilize tin oxide as the primary component in a heat compressed form.



ALPHA PROFESSIONAL TOOLS SUMMIT FINAL POLISH 8"

Final Surface Polishing on Granite. Alpha® Summit Final Polish wheels are designed for use on radial arm polishers for the flat surface polishing of granite. Used with a little water for lubrication, Alpha® Summit Final Polish wheels provide the high gloss and excellent reflection that is only produced with large automatic polishing machines.



ALPHA PROFESSIONAL TOOLS SUMMIT FINAL POLISH 6"

Final Surface Polishing on Granite. Alpha® Summit Final Polish wheels are designed for use on radial arm polishers for the flat surface polishing of granite. Used with a little water for lubrication, Alpha® Summit Final Polish wheels provide the high gloss and excellent reflection that is only produced with large automatic polishing machines.



ALPHA PROFESSIONAL TOOLS SUMMIT RESIN BOND WHEELS 10"

Applications such as the fabrication of countertops, tabletops, and the backsides of slabs or monument sides and tops, can easily be processed. The resin wheels are long lasting and provide superior quality performance compared to old-fashioned polishing methods. Alpha® Summit Resin Polishing wheels give you fast and consistent results. These wheels are easy to use and are quick to change from grit to grit.



ALPHA PROFESSIONAL TOOLS SUMMIT RESIN BOND WHEELS 6"

Applications such as the fabrication of countertops, tabletops, and the backsides of slabs or monument sides and tops, can easily be processed. The resin wheels are long lasting and provide superior quality performance compared to old-fashioned polishing methods. Alpha® Summit Resin Polishing wheels give you fast and consistent results. These wheels are easy to use and are quick to change from grit to grit.

Planing Wheels / Polishing



ALPHA PROFESSIONAL TOOLS SUMMIT RESIN BOND WHEELS 8"

Surface Polishing for Granite. Alpha® Summit Resin Polishing wheels fit most common radial arm polishers found throughout the North American stone industry. These resin wheels are designed to match the factory finish provided by large multi-head polishing machines.



ALPHA PROFESSIONAL TOOLS KIRARA PADS

Alpha® introduces Kirara Pads which are designed for the maintenance of marble, limestone and concrete surfaces by using only a maximum of 3 steps. Kirara pads are designed for wet polishing but do not require a lot of water. If the surface is lightly wet, it can be enough to cool the cutting edge for a successful application, without having to use final polishing pads or acidic polishing powders and/or chemicals.



ALPHA PROFESSIONAL TOOLS SOLID FELT WITH VELCRO

Felt Wheels For Use with Polishing Powders. The Alpha® Felt Wheel is a very popular material for the final buff process in stone fabrication. Alpha® Felt Wheels are hook and loop backed buffing wheels designed for use with polishing powders, polishing pastes, and polishing bars.



ALPHA PROFESSIONAL TOOLS SUMMIT METAL BOND WHEELS 10"

Surface Preparation for Polishing. Alpha® Summit Metal Bond wheels for radial arm wet polishers begin the polishing process. They grind and hone the granite surface making it smooth enough to take a polish. These wheels remove gang saw marks and prepare the granite surface for transition to polishing grits.



ALPHA PROFESSIONAL TOOLS SUMMIT METAL BOND WHEELS 6"

Surface Preparation for Polishing. Alpha® Summit Metal Bond wheels for radial arm wet polishers begin the polishing process. They grind and hone the granite surface making it smooth enough to take a polish. These wheels remove gang saw marks and prepare the granite surface for transition to polishing grits.



ALPHA PROFESSIONAL TOOLS SUMMIT METAL BOND WHEELS 8"

Surface Preparation for Polishing. Alpha® Summit Metal Bond wheels for radial arm wet polishers begin the polishing process. They grind and hone the granite surface making it smooth enough to take a polish. These wheels remove gang saw marks and prepare the granite surface for transition to polishing grits.



BAICCHI 10 " CARBORUNDUM HONING WHEEL

CARBORUNDUM 120 GRIT, CARBORUNDUM 240 GRIT, CARBORUNDUM 600 GRIT



BAICCHI 5 " CARBORUNDUM HONING WHEEL

BAICCHI 5" CARBORUNDUM 120 GRIT, Carborundum pad for honing. For Use On Angle Grinders. CARBORUNDUM 120 GRIT, CARBORUNDUM 240 GRIT, CARBORUNDUM 600 GRIT

Planing Wheels / Polishing



COTTON PADS

Cotton Pads attach the special "Stitched Cotton Pads" to a straight end grinder or bench grinder, turn on the machine and touch the pad with a "Marlite Bar" to produce a build-up on the pad. Buffing the edge of marble or granite will produce a polish which will appear on the stone's edge in a matter of moments.



CYCLONE DRUM WHEEL BUFF POLISHING

Cyclone drum wheel buff for Polishing are part of our Stone Fabrication and Supplies line of products. Edge polishing for sink cut-outs. Recommended use: Oscillate up and down for proper even drum wear. Rubber drum increases tread life & reduces vibration. 5/8" - 11 female thread Optional: (M18 x 2 thread). Maximum RPM's: 3,000.



EASTERN MARBLE MARLITE EDGE POLISHING BARS BOX OF 6

Marlite Edge Polishing Bars are Used To Polish The Edges Of Marble & Limestone. Sold Individually Or In Boxes Of Six. Attach the special "Stitched Cotton Pads" to a straight end grinder or bench grinder, turn on the machine and touch the pad with a "Marlite Bar" to produce a build-up on the pad.



EASTERN MARBLE GRANITE EDGE POLISHING BARS

Black bars are recommended for darker granites. Sold Individually. Attach the special "Stitched Cotton Pads" to a straight end grinder or bench grinder, turn on the machine and touch the pad with a "Black Marlite Bar" to produce a build-up on the pad. Buffing the edge of marble or granite will produce a polish which will appear on the stone's edge in a matter of moments.



EASTERN MARBLE MARLITE EDGE POLISHING BARS

Marlite Edge Polishing Bars are Used To Polish The Edges Of Marble & Limestone. Sold Individually Or In Boxes Of Six. Attach the special "Stitched Cotton Pads" to a straight end grinder or bench grinder, turn on the machine and touch the pad with a "Marlite Bar" to produce a build-up on the pad. Buffing the edge of marble or granite will produce a polish which will appear on the stone's edge in a matter of moments.



GREEN HONING PAD 10"

GREEN HONING PAD 10" Nylon pad for honing



ITALIAN CRAFTMAN DIAMOND WHEEL FOR RADIAL ARM BED POLISHER 10" DIAMETER

Used for granite polishing on a radial arm bed polisher.

Stone Fabrication & Supplies

Planing Wheels / Polishing



ITALIAN CRAFTSMAN DIAMOND WHEEL FOR RADIAL ARM BED POLISHER 10" DIAMETER

Used for granite polishing on a radial arm bed polisher.



ITALIAN CRAFTSMAN DIAMOND WHEEL FOR RADIAL ARM BED POLISHER 10" DIAMETER

Used for granite polishing on a radial arm bed polisher.



ITALIAN CRAFTSMAN FRANKFURT METAL BOND

Frankfurt metal brick for heavy grinding or stock removal.



ITALIAN CRAFTSMAN #52 SPECIAL BUFFING POWDER ALUMINUM OXIDE

Aluminum Oxide Buffing Compound. #52 Special is the base compound in many of the powders used to polish marble, limestone & granite.



ITALIAN CRAFTSMAN 5X POLISHING POWDER

Orange Powder consists of aluminum oxide, two natural resins and Potassium 5-EXTRA Oxalate. Exceptional polishing powder for marbles. Specially formulated to prevent burning and produces a stable, long lasting polished finish.



ITALIAN CRAFTSMAN FRANKFURT BRICKS "G" SERIES

Italian Craftsman Frankfurt Bricks in the "G" series have proven to be durable and cost effective. They have a longer life than conventional bricks which means less down time and higher productivity. For use on line machines, bed polishers and floor machines.



ITALIAN CRAFTSMAN DIAMOND WHEEL FOR RADIAL ARM BED POLISHER 10" DIAMETER

Italian Craftsman 5 Extra polishing bricks are used to create the final polish on marble. These bricks are used in many processing facilities and are made from the very popular "Original 5X". For use on line machines, bed polishers and floor machines.



ITALIAN CRAFTSMAN GRANITE HONING POWDER COURSE, MEDIUM, AND FINE GRAIN

Granite honing powder is used to smooth out the swirl marks from the abrasives that are used during the honing process. This very dense "black silicon carbide" is strong enough to affect the surface of granite in a positive way, smoothing it, evening it out and deepening the color. Granite honing powder can be used on bed polishers, floor polishing machines and slow speed angle grinders. Use with solid felts or nylon polishing pads.

Stone Fabrication & Supplies

Planing Wheels / Polishing



ITALIAN CRAFTSMAN GRANITINA POWDER GRANITE POLISHING COMPOUND

Italian Craftsman Granitina Buffing Powder is a blended buffing powder that is used to bring granite to a high polish. Made in Italy, this aluminum oxide based compound is used to polish granite with solid felt pads and nylon polishing pads. Can also be used with crystallizer to polish granites.



ITALIAN CRAFTSMAN HOLDERS FOR FRANKFURT BRICKS

These holders are mounted on the drive plates of bed polishers, floor polishers and automatic line equipment to hold "Frankfurt Brick Segments".



ITALIAN CRAFTSMAN LEAD & FELT WHEEL

The Lead and Felt Wheel is a wrapping of lead and felt which forms a polishing wheel. The invention of the Lead and Felt Wheel has made polishing granite much faster and easier. This wheel should be used with a velcro backing pad on a right angle grinder. The Lead and Felt Wheel and polishing powder are used for the final polish.



ITALIAN CRAFTSMAN MARBLE HONING POWDER

A non-acidic powder that removes fine scratches and wear patterns, restoring the surface to an evenly honed finish. Fine grain, aluminum oxide abrasive powder used for honing limestones and marbles.



ITALIAN CRAFTSMAN OXALIC ACID

Oxalic Acid is used to polish marble & limestone. Typically, Oxalic Acid is mixed with other oxide powders, such as Aluminum Oxide or Tin Oxide to form an acidic compound. We offer the finest grade of Oxalic Acid for use with the polishing powders.



ITALIAN CRAFTSMAN PAMIR

Excellent for touching up marble and granite that is difficult to polish. hard to polish. Paraffin Wax from Italy is used around the world for polishing and protecting counter tops and walls.



ITALIAN CRAFTSMAN POLISHING CREAM

A natural polishing compound for restoring the polish on Calcium Carbonate stones. For use on Marble and Limestone. Works well on most Serpentine. Restores polish on etched areas. (sanding may be necessary) Restores dulling vanity tops and shower walls. Polish your worn traffic areas in entry ways, powder rooms, hallways and any floors that need polishing. Contains no re-crystallization acids. Does not damage marble.

Planing Wheels / Polishing



ITALIAN CRAFTSMAN POLISHING WHEEL

ITALIAN CRAFTSMAN POLISHING WHEEL FOR RADIAL ARM BED POLISHER 10" DIAMETER Used for granite polishing on a radial arm bed polisher.



ITALIAN CRAFTSMAN HOLDERS FOR FRANKFURT BRICKS

Tradicional "Italian" Marble Polishing Powder (commonly know as "Putty Powder"). This blend of polishing powders, made famous by the Italians, has been used by marble floor restorers for decades. Using a 175 RPM floor machine, put the powder on the floor and add enough water to create a "wet slurry". Buff until desired results are achieved.



ITALIAN CRAFTSMAN SOLID FELT MEDIUM 10" X 2"

Medium Solid Felt wheel for polishing marbles with compounds and oxide powders. For use on bed polishers.



ITALIAN CRAFTSMAN SUPER 52B BUFFING POWDER

Oxalic Acid is used to polish marble & limestone. Typically, Oxalic Acid is mixed with other oxide powders, such as Aluminum Oxide or Tin Oxide to form an acidic compound. We offer the finest grade of Oxalic Acid for use with the polishing powders.



ITALIAN CRAFTSMAN SUPER 52B BUFFING POWDER

Tin oxide has been proven to be a highly effective polishing material for marble, granite and quartz. In a similar chemical reaction to that with glass, tin oxide restores the luster of stone surfaces, especially marble & granite flooring that has become dull over time.



ITALIAN CRAFTSMAN TRAVERTINE FILL ADDITIVE

Italian Craftsman TRAVERTINE FILL ADDITIVE



ITALIAN CRAFTSMAN TRAVERTINE FILL BEIGE (BUFF)

Cement Fill For Travertine & Limestone Just Add Water. Color: Beige (Buff) 25 Lbs. Mix The Powder With Water Into A Creamy Consistency. Spread over The Area That Needs To Be Filled With A Squeegee Or Trowel and Let Dry. Drying Time Varies Depending On Conditions. Normal Set Time Is 24 Hours. After The Material Is Hard, Sand Off The Excess With Your Floor Machine Using The Next Step In The Sequence You Are Using, Leaving The Material Flush To The Surface. TRAVERTINE FILL IS A NON-POLISHABLE CEMENT FILL.

Planing Wheels / Polishing



ITALIAN CRAFTSMAN TRAVERTINE FILL WHITE

talian Craftsman TRAVERTINE FILL MADE IN ITALY White 25 Lbs. Cement Fill For Travertine & Limestone Just Add Water. Color: White 25 Lbs. Mix The Powder With Water Into A Creamy Consistency. Spread over The Area That Needs To Be Filled With A Squeegee Or Trowel and Let Dry. Drying Time Varies Depending On Conditions. Normal Set Time Is 24 Hours. After The Material Is Hard, Sand Off The Excess With Your Floor Machine Using The Next Step In the Sequence You Are Using, Leaving The Material Flush To The Surface. TRAVERTINE FILL IS A NON-POLISHIBLE CEMENT FILL.



ITALIAN CRAFTSMAN TRAVERTINE-FILL KIT

Cement Fill With Acrylic Additive For Travertine & Limestone. Mix The Powder With The Acrylic Additive Into A Creamy Consistency. Spread over The Area That Needs To Be Filled With A Squeegee Or Trowel and Let Dry. Drying Time Varies Depending On Conditions. Normal Set Time Is 24 Hours. After The Material Is Hard, Sand Off The Excess With Your Floor Machine Using The Next Step In the Sequence You Are Using, Leaving The Material Flush To The Surface. TRAVERTINE FILL IS A NON-POLISHIBLE CEMENT FILL.



JAGUAR POLISHING PAD

JAGUAR POLISHING PAD 10" 50% FIBER, 50% Nylon pad for polishing For use with polishing powders



LEAD SHEETS

Lead sheets are used on floor grinding machines to aid in the polishing of granites.



MARLITE EDGE POLISHING

For use on a bed polisher



PRE-POLISH HONING WHEEL 10"

3/4 Polishing wheels for bed polishers



RED POLISHING PADS 10 INCHES

RED POLISHING PADS 10 inches are Nylon pads for honing or cleaning. They are part our Polishing and Scrubbing product collection.

Stone Fabrication & Supplies

Planing Wheels / Polishing



SCREENS 10 INCH DIAMETER

SCREENS 10 Inch DIAMETER are Silicon carbide screens for honing.



SUPER EDGES 750 ML

Super Edges 750 ML is used for polishing the edges of marble granite and stone. Eastern Marble & Granite Supply offers a wide range of Polishing Powders and compounds suitable for Marble and Stone and other Natural Surfaces. This product was developed to brighten and intensify the color of edges of any material.



TENAX FRANKFURT FILIFLEX

tenax diamond brushes can be used on existing tools that are used everyday in fabrications shops. Airflex brushes remove the "softer" material in the stone to create a beautiful texture while enhancing the natural color in the stone. The Tenax Filiflex comes in 36, 46, and 60 grit.



TENAX GRANITE FICKERT

Abrasive stones used on rocking heads on automatic line polishing machines.



TENAX TEWAX PASTE WAX

PREMIUM GRADE WAX -Tewax is used to increase the polishing effect on onyxes, marble, natural stones, granite, agglomerates, terrazzo. Also it is used to brighten up a lost polish. The application may increase the polish from 5-6 to 15-16 points of gloss. This product is completely without solvents which contains trichloroethylene, that may cause dangerous irreversible effects to humans.



WHITE NYLON POLISHING PADS 10"

Nylon pad for polishing. For use with polishing powders. Nylon pad for honing or cleaning. JAGUAR 50% FIBER 50% NYLON, RED, WHITE.



WRAPPED FELT MOP 10" DIAM

Wrapped felt mop for polishing. For use on a bed polisher

Router Bits / Brazed



ITALIAN CRAFTSMAN BRAZED DIAMOND ROUTER BIT SHAPE "B" (1/2 BULLNOSE) 22 MM FLANGE ATTACHMENT

Brazed diamond router bit with bottom bearing (template-free guide) for shaping the edge of stone slabs. Stone Cutters, 2-6" Carriage Assemblies, Guide Rail Set (4', 7', 12') & Surface Protection Tape. For use on portable stone routers. Template-free bearing guide. Supplied with 8mm & 10mm tighten down bolts. External water feed only.



ITALIAN CRAFTSMAN BRAZED DIAMOND ROUTER BIT SHAPE "F" (OGEE) 22 MM FLANGE ATTACHMENT

Brazed diamond router bit with bottom bearing (template-free guide) for shaping the edge of stone slabs. For use on portable stone routers. Template-free bearing guide. Supplied with 8mm & 10mm tighten down bolts. External water feed only.



ITALIAN CRAFTSMAN BRAZED DIAMOND ROUTER BIT SHAPE "V" (FULL BULLNOSE) 22 MM FLANGE ATTACHMENT

Brazed diamond router bit with center bearing (template-free guide) for shaping the edge of stone slabs. 199-129. For use on portable stone routers. Template-free bearing guide. Supplied with 8mm & 10mm tighten down bolts. External water feed only.



ITALIAN CRAFTSMAN BRAZED DIAMOND SHAPING WHEEL SHAPE "V" (FULL BULLNOSE) 22 MM FLANGE ATTACHMENT

Diamond shaping wheel with bottom bearing and top bearing guide used on water feed angle grinders for shaping edges of stone tiles and slab material. Polishing accessories available. Use on right angle grinder with 5/8"-11 male spindle. Center water feed.



ITALIAN CRAFTSMAN BRAZED DIAMOND SHAPING WHEEL SHAPE "F" (OGEE) 5/8"-11 FEMALE THREAD

Diamond shaping wheel with bottom bearing and top bearing guide used on water feed angle grinders for shaping edges of stone tiles and slab material. Polishing accessories available. Use on right angle grinder with 5/8"-11 male spindle. Center water feed.



ITALIAN CRAFTSMAN BRAZED DIAMOND SHAPING WHEEL SHAPE "V" (FULL BULLNOSE) 5/8"-11 FEMALE THREAD

Diamond shaping wheel with bottom bearing and top bearing guide used on water feed angle grinders for shaping edges of stone tiles and slab material. Polishing accessories available. Use on right angle grinder with 5/8"-11 male spindle. Center water feed.

Stone Fabrication & Supplies

Router Bits / Brazed



ITALIAN CRAFTSMAN DIAMOND PROFILE WHEEL 3/4" BEVEL BIT BRAZED DIAMOND POSITION 1 22MM FEMALE

3/4" Brazed diamond router bit for bevelling the edges of stone. For use on stone routers with with 22mm male shaft.



OMEITALIAN CRAFTSMAN DIAMOND PROFILE WHEEL 3/4" SHAPE "1" BRAZED DIAMOND POSITION 1 22MM FEMALE

3/4" Shape "1" Brazed diamond router bit for shaping the edges of stone. For use on stone routers with with 22mm male shaft.



ITALIAN CRAFTSMAN DIAMOND PROFILE WHEEL 3/4" SHAPE H (DUPONT) BRAZED DIAMOND POSITION 1 22MM FEMALE

1-3/16" Shape "H" (Dupont) Segmented diamond router bit for shaping the edges of stone. For use on stone routers with with 22mm male shaft.



ITALIAN CRAFTSMAN DIAMOND PROFILE WHEEL WITH GUIDE BEARINGS BRAZED DIAMONDS 1-3/16" SHAPE H (DUPONT) 5/8" - 11 FEMALE THREAD

1-3/16" Brazed diamond wheel for shaping the edges of stone.all common 2, 3, and 4cm bits. For use on angle grinders with 5/8" - 11 male thread.

Router Bits / Segmented



["DOUBLE BREAKER" SEGMENTED ROUTER BIT](#)

Double Breaker Segmented Router Bits have the ability to: Break the top and bottom corner consistently to save the life of your router bits. Can be used on 2cm, 3cm, or 4cm stone with different combination of bearing and spacers.



[ITALIAN CRAFTSMAN DIAMOND PROFILE WHEEL 1-3/16" SHAPE H \(DUPONT\) SEGMENTED DIAMOND POSITION 1 22MM FEMALE](#)

3CM Shape "H" (Dupont) Brazed diamond router bit for shaping the edges of stone. For use on stone routers with with 22mm male shaft.



[ITALIAN CRAFTSMAN DIAMOND PROFILE WHEEL 3/4" BEVEL BIT, SEGMENTED DIAMOND, POSITION 1](#)

3/4" Segmented diamond router bit for bevelling the edges of stone. For use on stone routers with with 22mm male shaft.



[ITALIAN CRAFTSMAN SEGMENTED DIAMOND ROUTER BIT](#)

Segmented diamond router bit with bottom bearing for shaping the edge of stone slabs. Also used for inside sink bowls. ITALIAN CRAFTSMAN SEGMENTED DIAMOND ROUTER BIT SHAPE Z STRAIGHT FOR INSIDE SINK BOWLS. For use on portable stone routers. Bottom bearing guide. Supplied with 8mm & 10mm tighten down bolts. External water feed only.



[ITALIAN CRAFTSMAN SEGMENTED DIAMOND ROUTER BIT SHAPE "B" \(1/2 BULLNOSE\) 22 MM FLANGE ATTACHMENT](#)

Diamond shaping wheel with bottom bearing and top bearing guide used on water feed angle grinders for shaping edges of stone tiles and slab material. Polishing accessories available. Use on right angle grinder with 5/8"-11 male spindle. Center water feed.



[ITALIAN CRAFTSMAN SEGMENTED DIAMOND ROUTER BIT SHAPE "F" \(OGEE\) 22 MM FLANGE ATTACHMENT](#)

Brazed diamond router bit with bottom bearing (template-free guide) for shaping the edge of stone slabs. For use on portable stone routers. Template-free bearing guide. Supplied with 8mm & 10mm tighten down bolts. External water feed only.

Stone Fabrication & Supplies

Router Bits / Segmented



ITALIAN CRAFTSMAN SEGMENTED DIAMOND ROUTER BIT SHAPE "V" (FULL BULLNOSE)

22 MM FLANGE ATTACHMENT

For use on portable stone routers. Template-free bearing guide. Supplied with 8mm & 10mm tighten down bolts. External water feed only.



ITALIAN CRAFTSMAN SEGMENTED DIAMOND ROUTER BIT SHAPE T

Segmented diamond router bit with center bearing for shaping the edge of stone slabs. Creates "pencil edge" shape on top and bottom. ITALIAN CRAFTSMAN SEGMENTED DIAMOND ROUTER BIT SHAPE T ROUNDOVER ON TOP AND BOTTOM, for use on portable stone routers. Center bearing guide. Supplied with 8mm & 10mm tighten down bolts. External water feed only.



ITALIAN CRAFTSMAN SEGMENTED DIAMOND SHAPING WHEEL SHAPE "B" (HALF ROUND)

5/8"-11 FEMALE THREAD

Diamond shaping wheel with bottom bearing and top bearing guide used on water feed angle grinders for shaping edges of stone tiles and slab material. Polishing accessories available. Use on right angle grinder with 5/8"-11 male spindle. Center water feed.



ITALIAN CRAFTSMAN SEGMENTED DIAMOND SHAPING WHEEL SHAPE "F" (OGEE) 5/8"-11 FEMALE THREAD

Diamond shaping wheel with bottom bearing and top bearing guide used on water feed angle grinders for shaping edges of stone tiles and slab material. Polishing accessories available. Use on right angle grinder with 5/8"-11 male spindle. Center water feed.



ITALIAN CRAFTSMAN SEGMENTED DIAMOND SHAPING WHEEL SHAPE "V" (FULL BULLNOSE)

5/8"-11 FEMALE THREAD

Diamond shaping wheel with bottom bearing and top bearing guide used on water feed angle grinders for shaping edges of stone tiles and slab material. Polishing accessories available. Use on right angle grinder with 5/8"-11 male spindle. Center water feed.



SEGMENTED ROUTER BIT SHAPE F+V OGEE OVER BULLNOSE

Eastern Marble & Granite supply offers a full line of Segmented Router Bits in our entire line of Stone and Fabrication Supplies. Here are the specifications of his Segmented Router Bit Shape F+V Ogee Over Bullnose

Router Bits / Segmented



SHAPE "1" PENCIL EDGE SEGMENTED ROUTER BIT

Shape "1" Pencil Edge Segmented Router Bit, Eastern Marble & Granite Supply Tel: 1-800 643-8818. We offer a full line of Router and Segmented Bits. Stone Fabrication Supplies for Natural Stone.



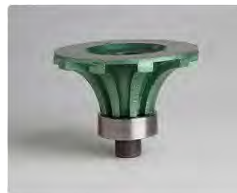
SHAPE "A" EASED EDGE SEGMENTED ROUTER BIT

Shape "A" Eased Edge Segmented Router Bit, Eastern Marble & Granite Supply Tel: 1-800 643-8818. We offer a full line of Router and Segmented Bits. Stone Fabrication Supplies for Natural Stone.



Shape "B-B" Triple Waterfall Segmented Router Bit

Shape "B-B" Triple Waterfall Segmented Router Bit, Eastern Marble & Granite Supply Tel: 1-800 643-8818. We offer a full line of Router and Segmented Bits. Stone Fabrication Supplies for Natural Stone.



SHAPE "B" DEMI BULLNOSE SEGMENTED ROUTER BIT

Shape "B" Demi Bullnose Segmented Router Bit, Eastern Marble & Granite Supply Tel: 1-800 643-8818. We offer a full line of Router and Segmented Bits. Stone Fabrication Supplies for Natural Stone.



SHAPE "FZ" PROFILE SEGMENTED ROUTER BIT

Shape FZ Profile Segmented Router Bit Apexx FZ profile is available in 3cm: FZ30 – Pos.0. Apexx FZ profile can be achieved with Apexx F profile. See below for details.



SHAPE "V" FULL BULLNOSE SEGMENTED ROUTER BIT

Shape V Full Bullnose Segmented Router Bit Apexx Full Bullnose profile is available in 2cm, 3cm, 4cm, 5cm, & 6cm: V20 – Pos.0. V30 – Pos.0. V40 – Pos.0. V50 – Pos.0. V60 – Pos.0



SHAPE "Z" FLAT EDGE SEGMENTED ROUTER BIT

Shape "Z" Flat Edge Segmented Router Bit: Note the Bearing Z bits are on the top.

Router Bits / Segmented



SHAPE E BEVEL SEGMENTED ROUTER BIT

Shape E Bevel Segmented Router Bit, Eastern Marble & Granite Supply Tel: 1-800 643-8818. We offer a full line of Router and Segmented Bits. Stone Fabrication Supplies for Natural Stone. Shape E Bevel Segmented Router Bit: Apexx 45° Bevel is available in 2cm & 3cm: E20 – Pos.0 E30 – Pos.0



SHAPE E-30 HOLLYWOOD BEVEL SEGMENTED ROUTER BIT

Shape E-30 Hollywood Bevel Segmented Router Bit, Eastern Marble & Granite Supply Tel: 1-800 643-8818. We offer a full line of Router and Segmented Bits. Stone Fabrication Supplies for Natural Stone. Specifications for Shape F Ogee Segmented Routed Bit Apexx Hollywood Bevel profile is available in 3cm: E30 x 30° – Pos.0 Apexx Eased Edge profile also called Round-over is available in 5/8"



SHAPE F OGEE SEGMENTED ROUTER BIT

Shape F Ogee Segmented Router Bit, Eastern Marble & Granite Supply Tel: 1-800 643-8818. We offer a full line of Router and Segmented Bits. Stone Fabrication Supplies for Natural Stone. Specifications for Shape F Ogee Segmented Routed Bit. Apexx Ogee profile is available in 2cm, 2.5cm, & 3cm: F20 – Pos.0 F25 – Pos.0 F30 – Pos.0



SHAPE FV OGEE BULLNOSE SEGMENTED ROUTER BIT

Eastern Marble & Granite supply offers a full line of Segmented Router Bits in our entire line of Stone and Fabrication Supplies. Here are the specifications of this Shape FV Ogee Bullnose Segmented Router Bit Apexx Ogee Bullnose profile is available in 3cm and 4cm: FV30 – Pos.0 FV40 – Pos.0



SHAPE L COVE SEGMENTED ROUTER BIT

Shape FZ Profile Segmented Router Bit Apexx FZ profile is available in 3cm: FZ30 – Pos.0. Apexx FZ profile can be achieved with Apexx F profile. See below for details.



SHAPE OG PROFILE SEGMENTED ROUTER BIT

Shape V Full Bullnose Segmented Router Bit Apexx Full Bullnose profile is available in 2cm, 3cm, 4cm, 5cm, & 6cm: V20 – Pos.0. V30 – Pos.0. V40 – Pos.0. V50 – Pos.0. V60 – Pos.0

Stone Fabrication & Supplies

Router Bits / Sintered



JOINT CLEAN-UP BIT SINTERED ROUTER BIT

Joint Clean-Up Bit Sintered Router Bit, Eastern Marble & Granite Supply Tel: 1-800 643-8818. We offer a full line of Router and Segmented Bits. Stone Fabrication Supplies for Natural Stone. To be used after the lamination and before. Z15 will clean up the middle part, it should be used before using a 2-piece router bit such as V or FV. Z40 will clean up more – through the bottom of the stone. It can be used before almost all the shapes of router bits.



SHAPE "E" PROFILE 45° (BEVEL) SINTERED ROUTER BIT

Shape "E" Profile 45° (Bevel) Sintered Router Bit - Apexx 45° Bevel is available in: E10 E15 E20 E30



SHAPE "T" DOUBLE EASED EDGE SINTERED ROUTER BIT

Double Eased Edge Sintered Router Bit Shape "T", Eastern Marble & Granite Supply Tel: 1-800 643-8818. We offer a full line of Router and Segmented Bits. Stone Fabrication Supplies for Natural Stone. Apexx Double Eased Edge profile is available in 2cm & 3cm: T20 T30



SHAPE "V" BULLNOSE SINTERED ROUTER BIT

Shape "v" Bullnose Sintered Router Bit, Eastern Marble & Granite Supply Tel: 1-800 643-8818. We offer a full line of Router and Segmented Bits. Stone Fabrication Supplies for Natural Stone. Apexx Full Bullnose profile is available in 2cm, 3cm, 4cm, 5cm, 6cm, 8cm, & 10cm: V20 V30 V40 V5 V60 V80 V100 (special order)



SHAPE "Z" FLAT EDGE SINTERED ROUTER BIT

Flat Edge Sintered Router Bit, Eastern Marble & Granite Supply Tel: 1-800 643-8818. We offer a full line of Router and Segmented Bits. Stone Fabrication Supplies for Natural Stone. Apexx Flat Edge profile is available in 4cm: Z40



SHAPE 1 PENCIL EDGE SINTERED ROUTER BIT

Shape 1 Pencil Edge Sintered Router Bit. Apexx Pencil Edge profile is available for in 3cm, 4cm, 5cm, 6cm, 8cm, & 10cm: 1-30 1-40 1-50 1-60 1-80 (special order) 1-100 (special order)



SHAPE A EASED EDGE SINTERED ROUTER BIT

Shape A Eased Edge Sintered Router Bit, Apexx Eased Edge profile is available in radius of 1/8", 1/4", 3/8", & 5/8": A20 - 1/8" A20 - 1/4" A20 - 3/8" A30 - 5/8" (A30-R15)

Stone Fabrication & Supplies

Router Bits / Sintered



SHAPE B DEMI BULLNOSE SINTERED ROUTER BIT

Shape B Demi Bullnose Sintered Router Bit. Apexx Demi Bullnose profile is available in radius of 1cm, 1.5cm, 2cm, 2.5cm (1"), 3cm, 4cm, & 4.5cm: B10, B15, B20, B25, B30, B40, B45



SHAPE B-B TRIPLE WATERFALL SINTERED ROUTER BIT

Shape B-B Triple Waterfall Sintered Router Bit, Apexx Triple Waterfall profile is available for: 2cm, 2.5cm (1"), 3cm, & 4cm: B+B20, B+B25, B+B30, B+B40



SHAPE D PROFILE SINTERED ROUTER BIT

Shape D Profile Sintered Router Bit, Apexx D profile router bit is available for 2cm & 3cm stone: D20, D30



SHAPE E MITER EDGE SINTERED ROUTER BIT

Shape E Miter Edge Sintered Router Bit - Looking to get your Miter edge done in a nice way? Apexx E33 Miter Edge router bit is a perfect solution. See the drawing below for details.



SHAPE EX 30 HOLLYWOOD BEVEL SINTERED ROUTER BIT

Shape Ex 30 Hollywood Bevel Sintered Router Bit - Apexx Hollywood Bevel profile is available in 2cm and 3cm: E20 x 30°, E30 x 30°



SHAPE F OGEE SINTERED ROUTER BIT

Shape F Ogee Sintered Router Bit - Apexx Ogee profile is available in 1.5cm, 2cm, 2.5cm, 3cm, 4cm, & 5cm: F15, F20, F25, F30, F40, F50



SHAPE F PLUS V OGEE OVER BULLNOSE SINTERED ROUTER BIT

Shape F Plus V Ogee Over Bullnose Sintered Router Bit - Apexx Ogee over Bullnose profile is available in 3cm, 4cm, & 6cm: F+V30 F+V40 F+V60

Stone Fabrication & Supplies

Router Bits / Sintered



SHAPE FA AMERICAN OGEE SINTERED ROUTER BIT

Shape FA American Ogee Sintered Router Bit – Apexx American Ogee profile is available in 2cm & 3cm: A20 FA30



SHAPE FV OGEE BULLNOSE SINTERED ROUTER BIT

Shape FV Ogee Bullnose Sintered Router Bit – Apexx Ogee Bullnose profile is available in 3cm, 4cm, & 6cm: FV30 FV40 FV60



SHAPE FZ PROFILE SINTERED ROUTER BIT

Shape FZ Profile Sintered Router Bit – Apexx FZ profile is available in 2cm & 3cm: FZ20 FZ30

SPECIAL ORDER PLEASE CALL FOR AVAILABILITY & PRICING



SHAPE "B" DEMI BULLNOSE SEGMENTED ROUTER BIT

Shape "B" Demi Bullnose Segmented Router Bit, Eastern Marble & Granite Supply Tel: 1-800 643-8818. We offer a full line of Router and Segmented Bits. Stone Fabrication Supplies for Natural Stone.



SHAPE H DUPONT SINTERED ROUTER BIT

Shape H Dupont Sintered Router Bit – Apexx DuPont profile is available in 1.5cm, 2cm, 2.5cm, & 3cm: H15 H20 H25 H30



SHAPE I PROFILE SINTERED ROUTER BIT

Shape I Profile Sintered Router Bit – Apexx I profile is available in 3cm & 4cm: I-30 I-40



SHAPE L COVE SINTERED ROUTER BIT

Shape L Cove Sintered Router Bit – Apexx Cove profile is available in 2cm & 3cm: L20 L20-R15 L30

Stone Fabrication & Supplies

Router Bits / Sintered



SHAPE E BEVEL SEGMENTED ROUTER BIT

Shape O Cove Dupont Sintered Router Bit – Apexx Cove DuPont profile is available in 2cm, 2.5cm, 3cm, & 4cm
020, 025, 030, 040



SHAPE OG PROFILE SINTERED ROUTER BIT

as "shape 5") is available in 3cm: OG30



SHAPE Q COVE OGEE SINTERED ROUTER BIT

Shape Q Cove Ogee Sintered Router Bits Apexx Cove Ogee profile is available in 2cm, 2.5cm, 3cm, 4cm & 5cm: Q20, Q25, Q30, Q40, Q50



SHAPE RH A PROFILE SINTERED ROUTER BIT

Shape RH A Profile Sintered Router Bit, featured at Eastern Marble & Granite Supply, Tel: 1-800 643-8818. We offer a full line of Router and Segmented Bits. Stone Fabrication Supplies for Natural Stone. Apexx RH-A profile is available in 2cm & 3cm: RH20-A, RH30-A

Sandpaper For Fabrication



ALPHA PROFESSIONAL TOOLS 4" SANDPAPER VELCRO BACKED 50 PIECES PER BOX

Concrete and Marble Polishing. Alpha® Sandpaper discs consist of a waterproof hook and loop backed material combined with a silicon carbide abrasive, which is the perfect combination for use on marbles and softer types of natural stone. Marble fabricators find Alpha® Sandpaper to be effective and durable. Tile contractors find Alpha® Sandpaper to be very adaptable to onsite work and easy to use. Restoration workers can polish wide areas quickly without difficulty.



ALPHA PROFESSIONAL TOOLS 5" SANDPAPER VELCRO BACKED 50 PIECES PER BOX

Concrete and Marble Polishing. Alpha® Sandpaper discs consist of a waterproof hook and loop backed material combined with a silicon carbide abrasive, which is the perfect combination for use on marbles and softer types of natural stone. Marble fabricators find Alpha® Sandpaper to be effective and durable. Tile contractors find Alpha® Sandpaper to be very adaptable to onsite work and easy to use. Restoration workers can polish wide areas quickly without difficulty.



ALPHA PROFESSIONAL TOOLS PVA MS STYLE 4" DIAMETER 5/8" ARBOR BOX OF 10

Marble edge polishing system. Alpha® PVA MS style is a dry polishing system used to polish marble edges and is ideal for baseboard, corner and countertop edge applications. It is also excellent for job site touch-ups. Fast working and long lasting, Alpha® PVA MS is easy to use and works well on most common high-speed grinders.



ALPHA PROFESSIONAL TOOLS PVA MS STYLE 4" DIAMETER 5/8" ARBOR SINGLE PIECE

Marble edge polishing system. Alpha® PVA MS style is a dry polishing system used to polish marble edges and is ideal for baseboard, corner and countertop edge applications. It is also excellent for job site touch-ups. Fast working and long lasting, Alpha® PVA MS is easy to use and works well on most common high-speed grinders.



ALPHA PROFESSIONAL TOOLS PVA QUICK CHANGE (SNAIL LOCK) 4" DIAMETER SNAIL LOCK ATTACHMENT BOX OF 5

Marble edge polishing system. Alpha® PVA QC "Quick Change" System is a low speed version of the original PVA MS style and is designed for use on an aluminum snail-lock backer plate specifically developed for low speed polishing tools such as the AWP-158 and the AIR-680.



ITALIAN CRAFTSMAN HEAVY DUTY SAND PAPER 5" PACK OF 50, VELCRO BACKED

For dry sanding the edges of marble, travertine and limestone.

Sandpaper For Fabrication



ITALIAN CRAFTSMAN HEAVY DUTY SAND PAPER FOR DRY SANDING 4" KIT

SET 10 EACH OF 80, 120, 220, 320 AND 400 GRITS VELCRO BACKED. For dry sanding the edges of marble, travertine and limestone.



ITALIAN CRAFTSMAN HEAVY DUTY SAND PAPER FOR DRY SANDING 4" PACK OF 50, VELCRO BACKED

For dry sanding the edges of marble, travertine and limestone. For use on angle grinders. Recommended rpm's: 2,000-4,000. Male velcro backing pad needed.



STARCKE PSA SANDPAPER 5 INCHES

Starcke PSA Sandpaper 5 inches has many product features some of them are: Waterproof PSA discs with flexible paper backing.. Stick on to vinyl backing pad. Heavy duty silicon carbide sand paper. Grit sizes 36-50 per box. 60-50 per box. 80-100 per box. 120-100 per box. 220-100 per box. 320-100 per box. 400-100 per box. 600-100 per box. 800-100 per box. 1000-100 per box

Small Blades for Hand Tools, Tub and Tile Saws



ALPHA PROFESSIONAL TOOLS VETRO DIAMOND BLADE FOR GLASS

Vetro with 1" Arbor for Portable Rail Saw. Alpha® has expanded our most popular line of Vetro blades to now utilize a portable rail saw. Introducing the WG1001, a 10" diameter blade with 1" arbor size to fit on portable rail saws designed specifically to cut large glass tiles with ease.



ALPHA PROFESSIONAL TOOLS "Q" CUT BLADES

The Ultimate Wet Blade for Quartzite/Granite Tile. Formulated To Cut Hard Tiles Such As Quartzite/Granite. Tile Installer's Choice for Stone Tile. Designed for Fast, Precision Chip-Free Cutting. Perfect for 2cm Porcelain Paver Tile. Best Choice for Stone Tile Cutting; Fits on most popular Tile & Tub Saws; Perfect combination with AWS-110 and AWS-125



ALPHA PROFESSIONAL TOOLS 10" DIAMOND BLADE 1" - 5/8" ARBOR WET/DRY CUT

The Ultimate Diamond Blade for Granite Designed for dry cutting applications, Alpha® Plus is a premium diamond blade that can be used for cutting granite, engineered stone, marble, and other hard materials efficiently and quickly.



ALPHA PROFESSIONAL TOOLS 12" DIAMOND BLADE 1" - 20MM ARBOR WET/DRY CUT

The Ultimate Diamond Blade for Granite Designed for dry cutting applications, Alpha® Plus is a premium diamond blade that can be used for cutting granite, engineered stone, marble, and other hard materials efficiently and quickly.



ALPHA PROFESSIONAL TOOLS 4" DIAMOND BLADE DRY CUT

The Ultimate Diamond Blade for Granite Designed for dry cutting applications, Alpha® Plus is a premium diamond blade that can be used for cutting granite, engineered stone, marble, and other hard materials efficiently and quickly.



ALPHA PROFESSIONAL TOOLS 5" CONCAVE BLADE FOR WET SINK-HOLE CUTTING KIT

Convenient Curve Cutting Solution. The Alpha® Wet Sink-Hole Cutting Kit was created as a convenient solution for those who work with pre-fabricated countertops and need to cut sink holes.

Small Blades for Hand Tools, Tub and Tile Saws



ALPHA PROFESSIONAL TOOLS CONCAVE BLADE

Alpha Professional Tools CONCAVE BLADE Arbor size: 5/8" - 7/8" For marble & limestone. Curve Cutting on Marble The Alpha® Contour Blade for Marble is designed specifically for cutting marble and limestone sinkholes and other curve cutting applications. The special design incorporates an electroplated diamond on the both sides of the steel core, as well as on the peripheral cutting edge.



ALPHA PROFESSIONAL TOOLS ECLIPSE II 6" DIAMETER ARBOR SIZE: 7/8" - 5/8" - DIAMOND BORE MAXIMUM RPM'S: 10,100

General Purpose Blade for Stone Fabricators. Alpha® Eclipse II is ideal for general purpose use on common building materials such as masonry, concrete and tile. Alpha® Eclipse II fits on most of the angle grinders and wet stone cutters commonly found in the stone and construction industries. Similar in design to Alpha® Plus, Alpha® Eclipse II is versatile and will cut tile, brick, block, concrete, slate and natural stone accurately and cleanly.



ALPHA PROFESSIONAL TOOLS ECLIPSE II 4.5" DIAMETER ARBOR SIZE: 7/8" - 20MM MAXIMUM RPM'S: 13,200

High-End General Purpose Blade for Granite; Perfect for your Stone Tile Application; Can be used Wet or Dry. General Purpose Blade for Stone Fabricators. Alpha® Eclipse II is ideal for general purpose use on common building materials such as masonry, concrete and tile. Alpha® Eclipse II fits on most of the angle grinders and wet stone cutters commonly found in the stone and construction industries.



ALPHA PROFESSIONAL TOOLS ECLIPSE II 4" DIAMETER ARBOR SIZE: 20MM - 5/8" MAXIMUM RPM'S: 14,500

20mm Quad Drive. DEQ578 5" 2.1mm 12,200 7/8" Quad Drive. DEQ006 6" 2.1mm 10,100 20mm Quad Drive. DEQ678 6" 2.1mm 10,100 7/8" Quad Drive . DEQ007 7" 2.3mm 8,400 20mm Quad Drive. DEQ008 8" 2.3mm 7,400 20mm Flange with 8 holes. AAH-7/8 - - Aluminum Adapter 7/8" Thread/Quad Drive. AAH-20 - - Aluminum Adapter 20mm Thread/Quad Drive. BAH-5/8 - - Brass Adapter 5/8" Thread/Quad Drive \$22.25 efficiently and quickly.



ALPHA PROFESSIONAL TOOLS ECLIPSE II 5" DIAMETER ARBOR SIZE: 7/8" MAXIMUM RPM'S: 12,200

General Purpose Blade for Stone Fabricators. Alpha® Eclipse II is ideal for general purpose use on common building materials such as masonry, concrete and tile. Alpha® Eclipse II fits on most of the angle grinders and wet stone cutters commonly found in the stone and construction industries. Similar in design to Alpha® Plus, Alpha® Eclipse II is versatile and will cut tile, brick, block, concrete, slate and natural stone accurately and cleanly

Stone Fabrication & Supplies

Small Blades for Hand Tools, Tub and Tile Saws



ALPHA PROFESSIONAL TOOLS ECLIPSE II 7" DIAMETER ARBOR SIZE: 5/8" - DIAMOND BORE

MAXIMUM RPM'S: 8,400

High-End General Purpose Blade for Granite; Perfect for your Stone Tile Application; Can be used Wet or Dry. General Purpose Blade for Stone Fabricators. Alpha® Eclipse II is ideal for general purpose use on common building materials such as masonry, concrete and tile. Alpha® Eclipse II fits on most of the angle grinders and wet stone cutters commonly found in the stone and construction industries. Similar in design to Alpha® Plus, Alpha® Eclipse II is versatile and will cut tile, brick, block, concrete, slate and natural stone accurately and cleanly.



ALPHA PROFESSIONAL TOOLS ECLIPSE II 8" DIAMETER ARBOR SIZE: 5/8" - DIAMOND BORE

MAXIMUM RPM'S: 7,400

General Purpose Blade for Stone Fabricators. Alpha® Eclipse II is ideal for general purpose use on common building materials such as masonry, concrete and tile. Alpha® Eclipse II fits on most of the angle grinders and wet stone cutters commonly found in the stone and construction industries. Similar in design to Alpha® Plus, Alpha® Eclipse II is versatile and will cut tile, brick, block, concrete, slate and natural stone accurately and cleanly.



ALPHA PROFESSIONAL TOOLS HOT ROD BLADE FOR RODDING 7/8" - 20MM ARBOR

Cutting Channels for Support Rods. Alpha® developed a revolutionary way to improve the efficiency of fabricators. For years, slab fabricators have employed labor-intensive procedures for creating channels in the underside of countertops to accommodate stainless steel reinforcing rods at sink and cooktop cutouts. Alpha® recognized the opportunity for improvement and developed the Alpha® Hot-Rod. With this blade attached to the Alpha® AWS-110 or AWS-125 Wet Stone Cutter, a fabricator can accomplish the task in one easy pass.



ALPHA PROFESSIONAL TOOLS LIBERO DRY CUTTING BLADES MARBLE AND SOFT STONE

Ultimate Blade for Marble Alpha® Libero is designed to cut materials such as softer marbles, travertines, soapstones, and alabaster without the chipping and cracking commonly associated with the dry cutting process. The advanced electroplated bond outperforms any other blade when cutting softer grades of natural stone. When used on angle grinders and wet stone cutters, Alpha® Libero is aggressive and easy to use, which reduces finishing time and saves you raw material.



ALPHA PROFESSIONAL TOOLS PORCELLANA TILE BLADE

Hybrid Wet Saw Blade for All Tiles. Alpha® Porcellana is our premium wet cutting blade designed for use by tile professionals. The diamond grits and matrix are specially formulated to cut granite, marble, engineered stone and porcelain tile with minimal chipping.

Small Blades for Hand Tools, Tub and Tile Saws



ALPHA PROFESSIONAL TOOLS QUAD DRIVE DIAMOND BLADE 20 MM ARBOR DRY CUT

Exclusively for Flush Cutting Application for Granite Alpha® Quad combines the performance of Alpha® Plus, the ultimate diamond blade, with our unique design for flush cutting applications. Unlike other blades, Alpha® Quad accepts our exclusive Quad Drive Adapter, which eliminates the required lock nut. The Quad Drive Adapter has a threaded arbor that permits mounting on angle grinders for "flush cutting" applications.



ALPHA PROFESSIONAL TOOLS WET 9" DIAMOND BLADE 7/8" - 5/8" ARBOR DRY CUT

The Ultimate Diamond Blade for Granite Designed for dry cutting applications, Alpha® Plus is a premium diamond blade that can be used for cutting granite, engineered stone, marble, and other hard materials efficiently and quickly.



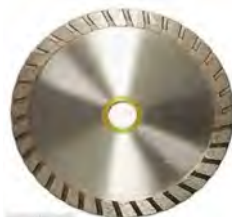
ALPHA PROFESSIONAL TOOLS WET/DRY DIAMOND BLADE DIAMOND BORE - 5/8" ARBOR

The Ultimate Diamond Blade for Granite Designed for dry cutting applications, Alpha® Plus is a premium diamond blade that can be used for cutting granite, engineered stone, marble, and other hard materials efficiently and quickly.



INDIAN DIAMOND BLADE GENERAL PURPOSE GRANITE, BLUESTONE AND MASONRY

Use on worm drive saws. Diamond bore to 5/8"-11. 7" DIAMOND BLADE, 8" DIAMOND BLADE



ITALIAN CRAFTSMAN GENERIC DIAMOND BLADE TURBO STYLE

Generic diamond blade for cutting natural stone. For use on angle grinders. Recommended RPM's range from 8,500 - 12,000.



PEARL ABRASIVES ELECTROPLATED DIAMOND BLADE FINE CUTTING

Electroplated Marble Blade. Advanced electroplated bond for a fast, clean chip-free cut. High diamond concentration for extra long life. Ideal for cutting marble and travertine. Wet or dry cutting Application: For Marble, Travertine, Soft Stone, Fiberglass.



WHITE LION QUARTZITE TURBO BLADES

White Lion Quartzite Turbo Blades are made with the very high diamond content and a bond to keep sharp, the Weha White Lion Quartzite Turbo Blade will cut fast and clean.

Snail Lock Wheels for Automatic Machines



ITALIAN CRAFTSMAN 4" COPPER WONDER GRIT WET OR DRY SNAIL LOCK

For Use On Automatic Edge Polishing Machines. 100 GRIT, 200 GRIT, 50 GRIT



ITALIAN CRAFTSMAN 4" TURBO STYLE POLISHING PADS SNAIL LOCK

4" Snail Lock Resin Diamond Wheel. For Use On Automatic Edge Polishing Machines. Works great on the "Fab King" for straight edge polishing.



ITALIAN CRAFTSMAN 5" COPPER EDGE WHEEL GRIT SNAIL LOCK

5" Snail Lock Copper Diamond Wheel. For Use On Automatic Edge Polishing Machines, 100 GRIT, 1000 GRIT, 200 GRIT, 2000 GRIT, 500 GRIT, 70 GRIT